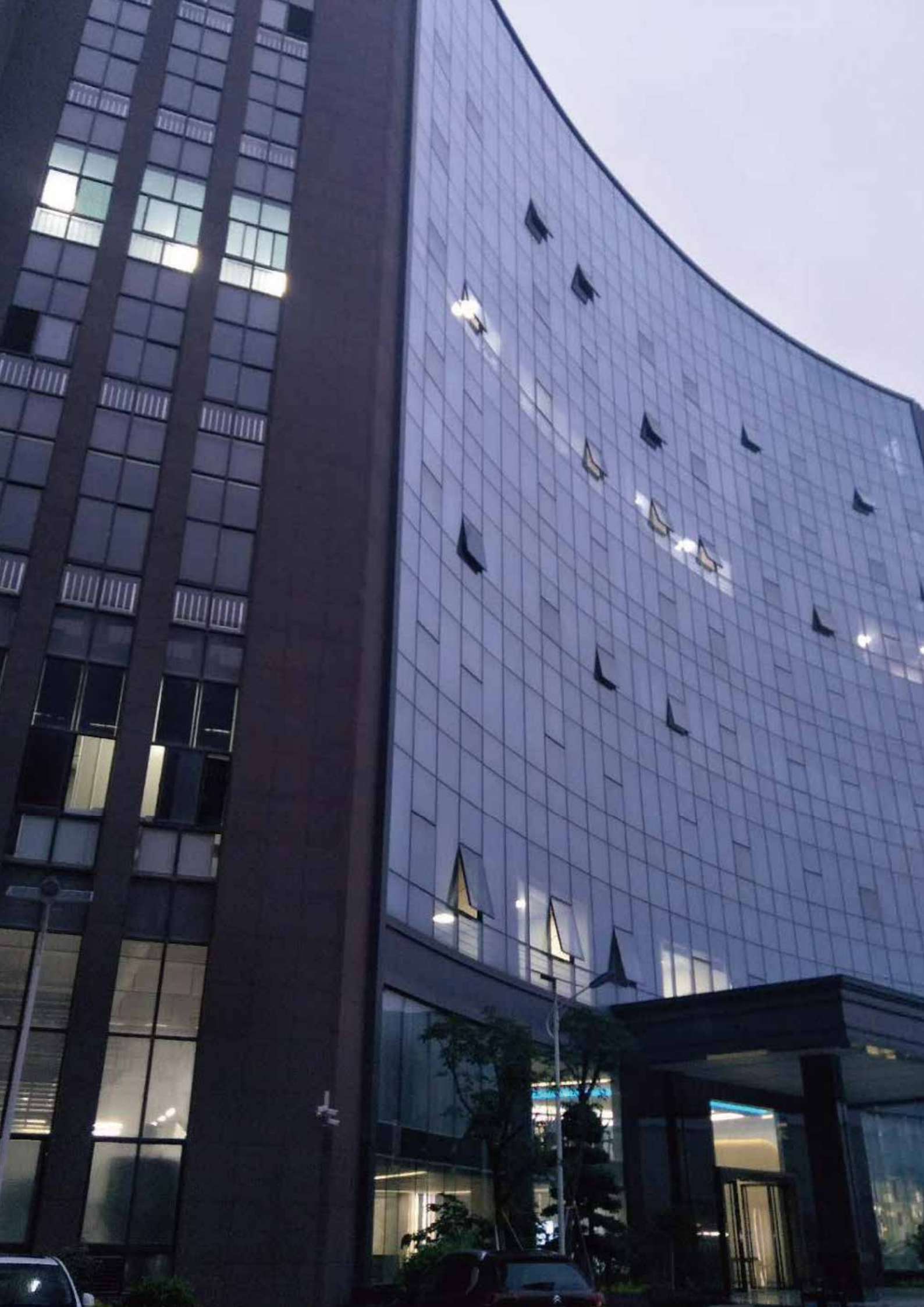


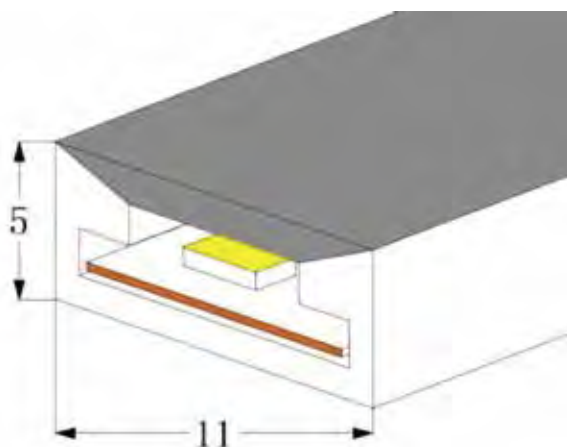
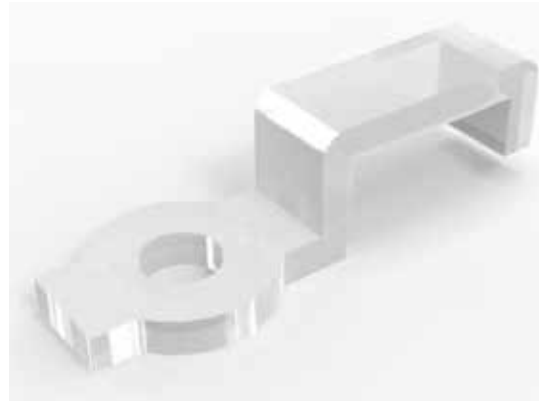
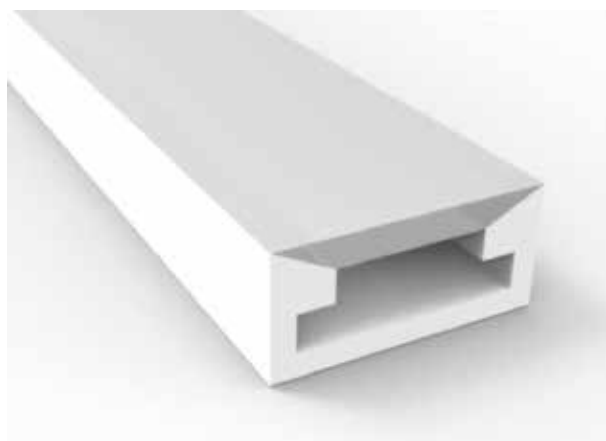
深圳市诚忠信实业有限公司

Shenzhen Chengzhongxin Industrial Co., Ltd.

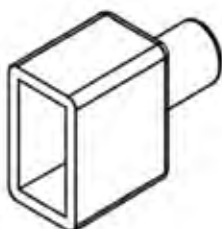




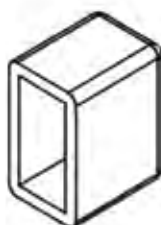
1. Side view 05*11(mm)



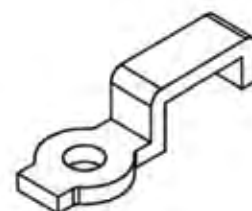
板宽 PCB Width(mm)	8
重量 Weight(g/m)	45
截面尺寸 Section size(mm)	5*11
发光角度 Beam angle	120°



出线堵头
End cap with hole

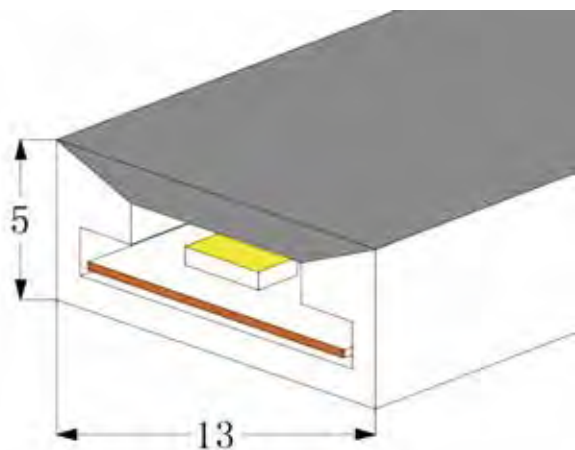
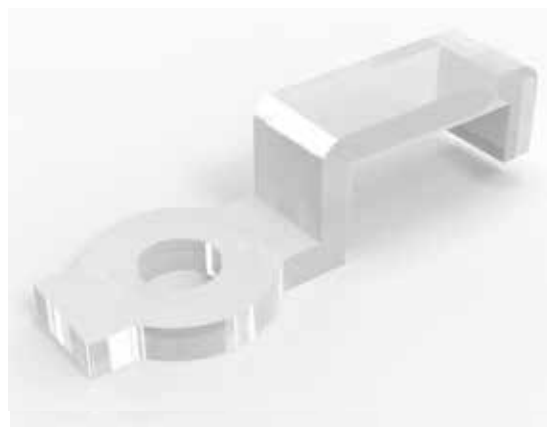
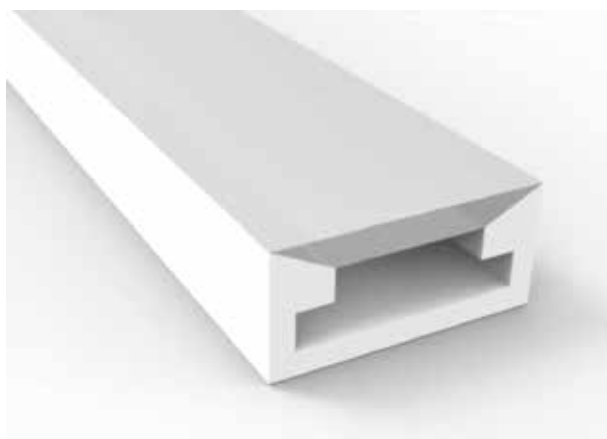


尾塞
End cap no hole

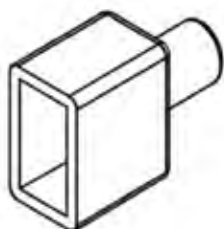


安装卡扣
Plastic clip

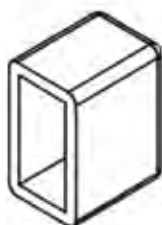
2. Side view 05*13(mm)



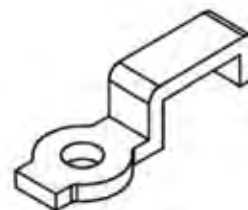
板宽 PCB Width(mm)	10
重量 Weight(g/m)	55
截面尺寸 Section size(mm)	5*13
发光角度 Beam angle	120°



出线堵头
End cap with hole

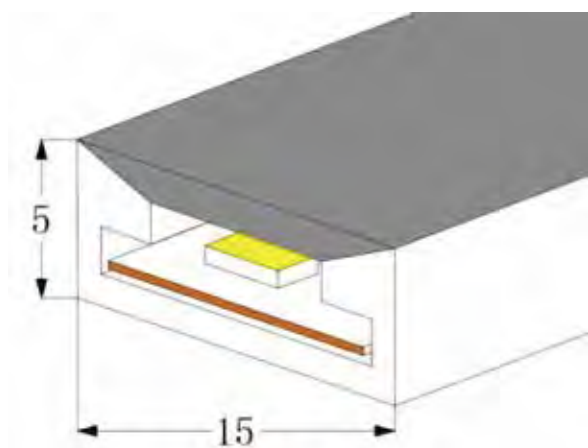
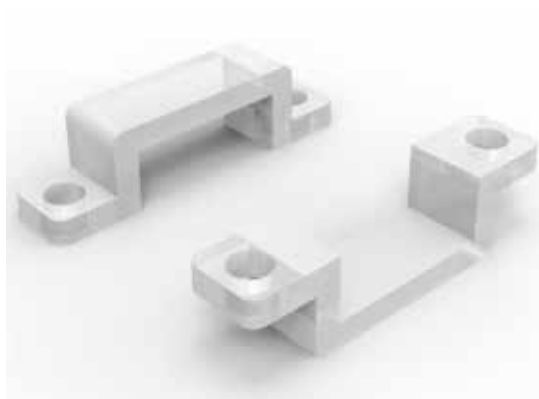
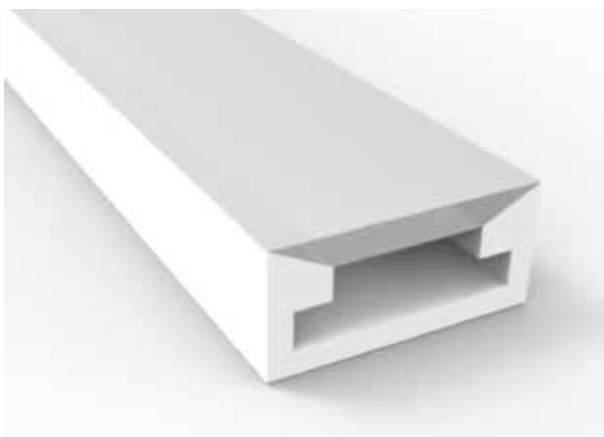


尾塞
End cap no hole

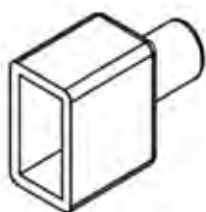


安装卡扣
Plastic clip

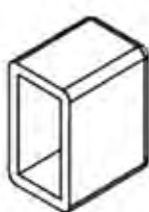
3. Side view 05*15(mm)



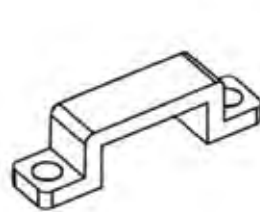
板宽 PCB Width(mm)	12
重量 Weight(g/m)	60
截面尺寸 Section size(mm)	5*15
发光角度 Beam angle	120°



出线堵头
End cap with hole

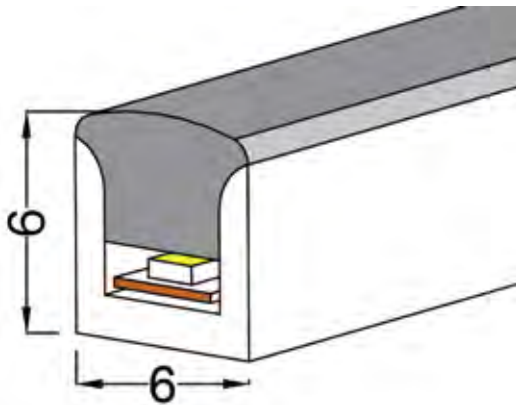
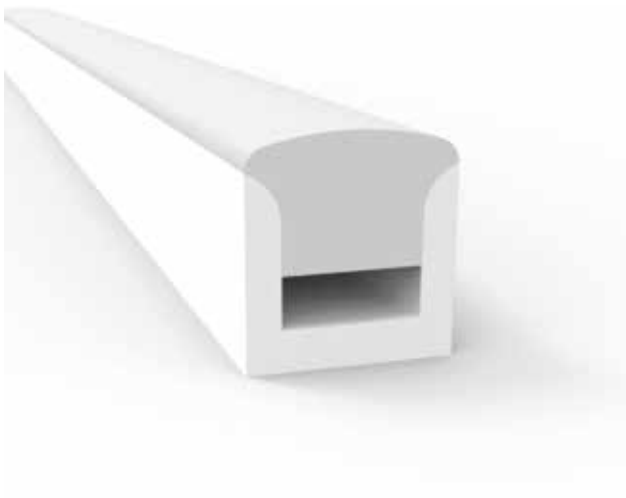


尾塞
End cap no hole

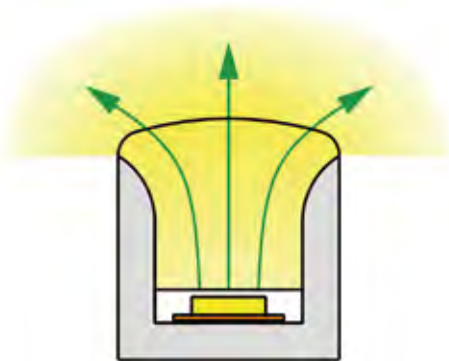


安装卡扣
Plastic clip

4.Side View 6*6(mm)

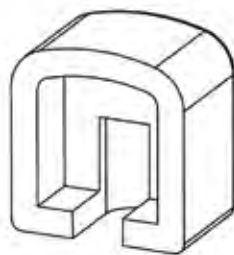


板宽 PCB Width(mm)	3
重量 Weight(g/m)	42.5
截面尺寸 Section size(mm)	6*6
发光角度 Beam angle	180°

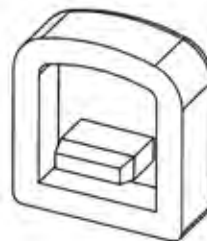


发光向:正发光

Lighting Dairrection: Positive Lighting

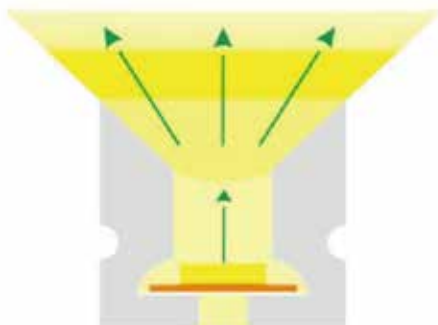
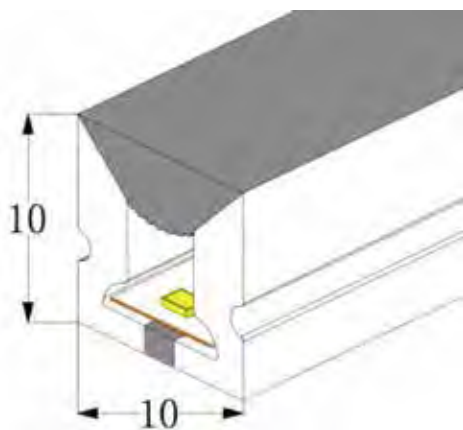
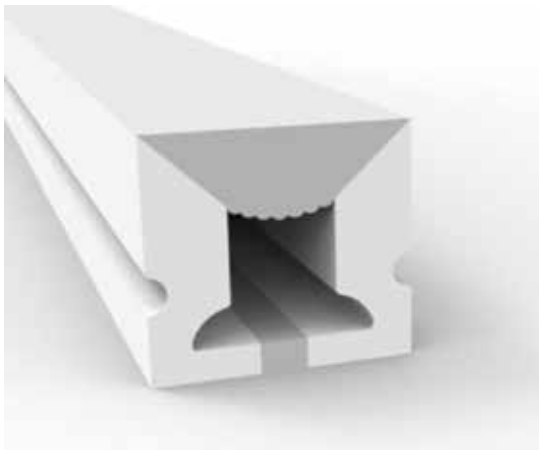


出线堵头
End cap with hole



尾塞
End cap no hole

5. Side view 10*10 (mm)

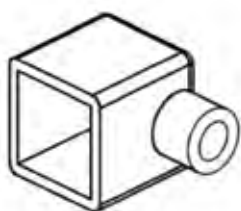


板宽 PCB Width(mm)	6
重量 Weight(g/m)	100
截面尺寸 Section size(mm)	10*10
发光角度 Beam angle	120°

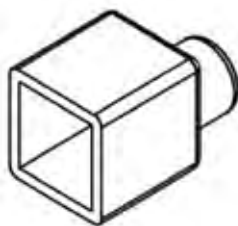
发光向:正发光

Lighting Dairction: Positive Lighting

剪刀口 Cutting mark:Yes



出线堵头
End cap with hole

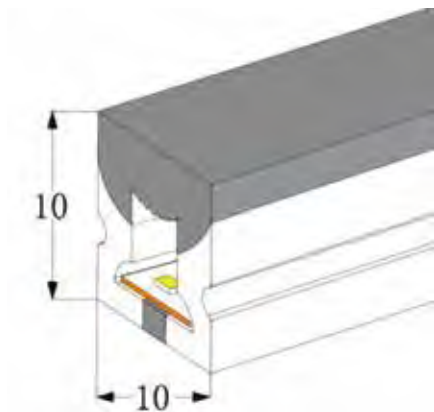
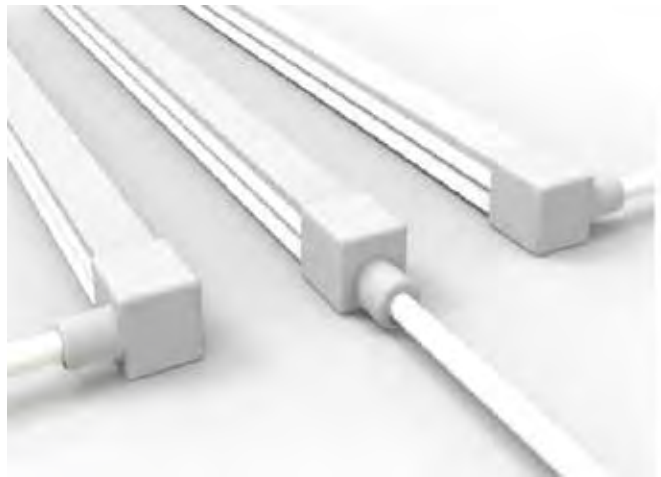


尾塞
End cap no hole

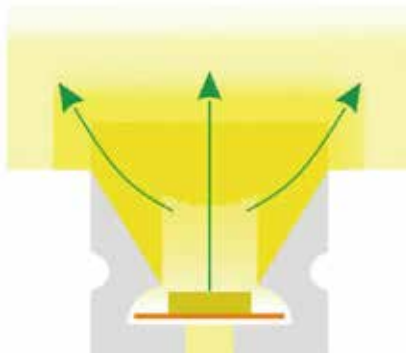


安装卡扣
Aluminum Clip

6. Side view 3 sides 10*10(mm)



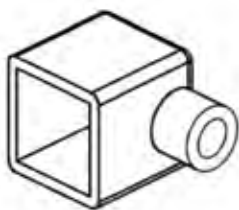
板宽 PCB Width(mm)	6
重量 Weight(g/m)	95
截面尺寸 Section size(mm)	10*10
发光角度 Beam angle	180°



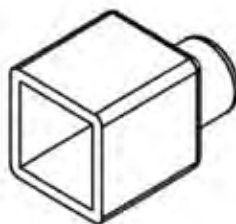
发光方向:三面正发光

Lighting Direction: 3 sides positive lighting

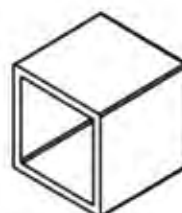
剪刀口 Cutting Mark Yes



出线堵头
End cap with hole

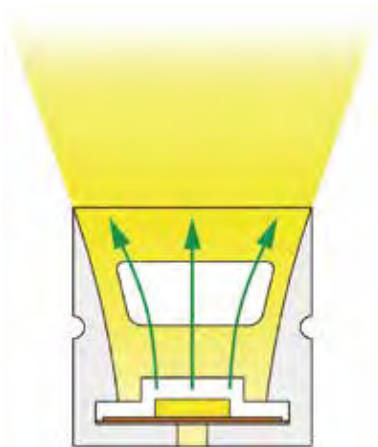
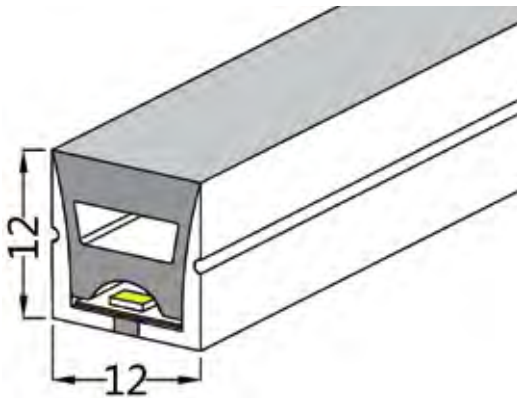


尾塞
End cap no hole



安装卡扣
Aluminum Clip

7.Side view 12*12(mm)

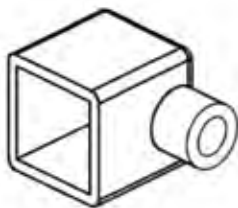


板宽 PCB Width(mm)	8
重量 Weight(g/m)	128
截面尺寸 Section size(mm)	12*12
发光角度 Beam angle	120°

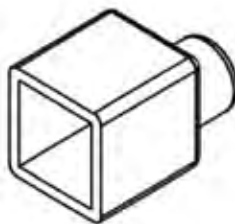
发光方向:正发光

Lighting Direction: Positive Lighting

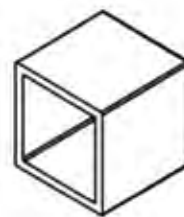
剪刀口 Cutting mark:Yes



出线堵头
End cap with hole

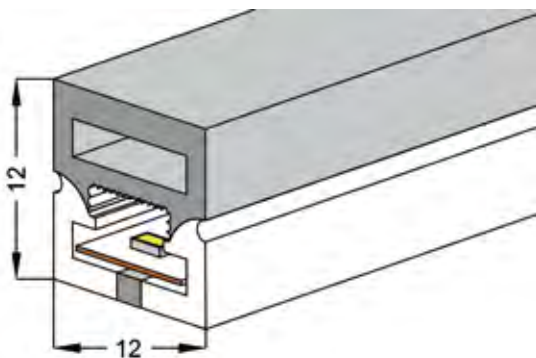
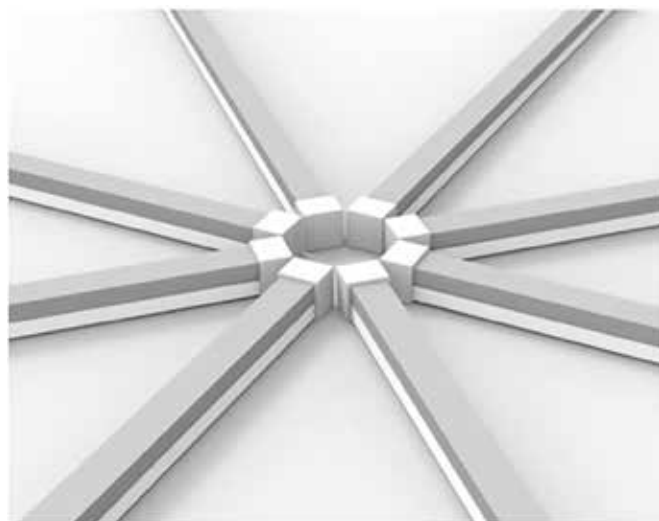
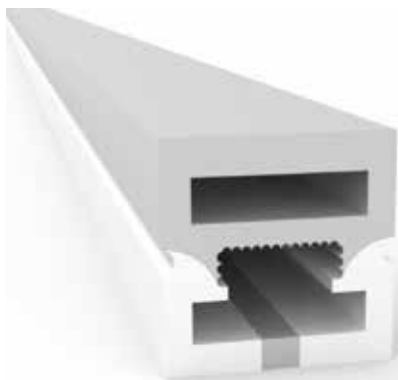


尾塞
End cap no hole

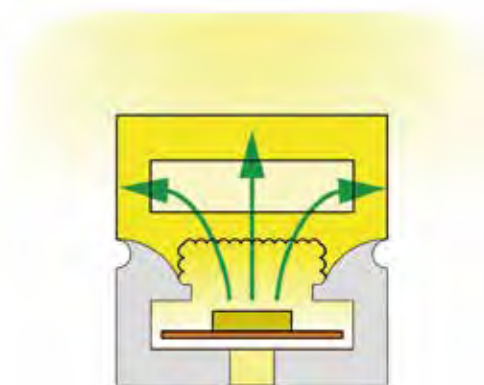


安装卡扣
Aluminum Clip

8.Side view 3sides 12*12(mm)



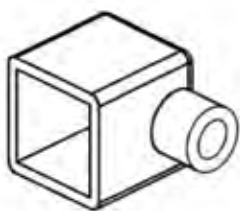
板宽 PCB Width(mm)	8
重量 Weight(g/m)	130
截面尺寸 Section size(mm)	12*12
发光角度 Beam angle	180°



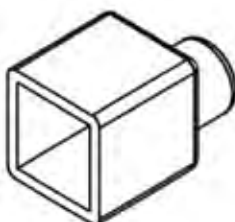
发光方向:三面正发光

Lighting Direction: 3 sides positive lighting

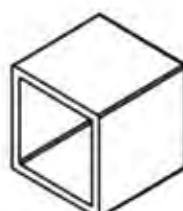
剪刀口 Cutting mark:Yes



出线堵头
End cap with hole

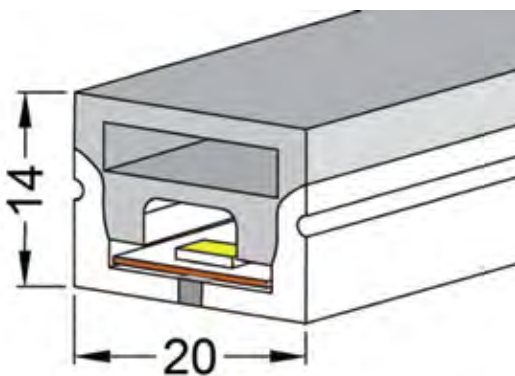
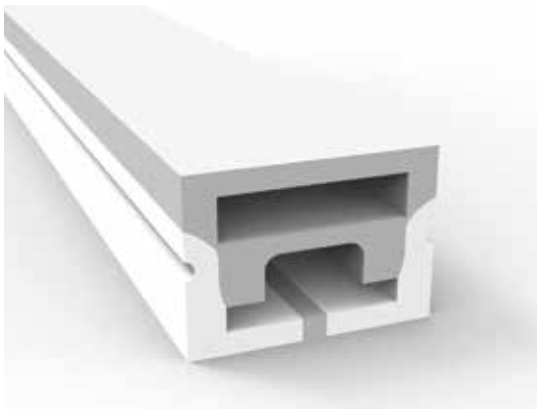


尾塞
End cap no hole

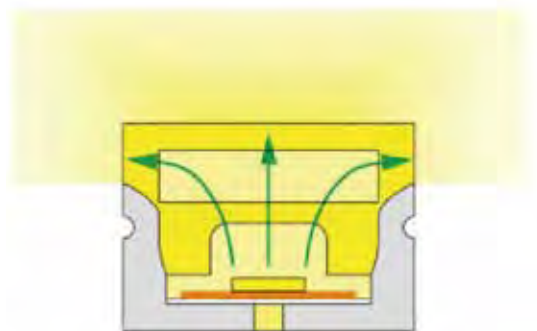


安装卡扣
Aluminum Clip

9. Side view 3sides 20*14(mm)



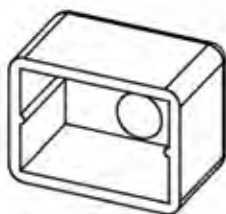
板宽 PCB Width(mm)	12
重量 Weight(g/m)	250
截面尺寸 Section size(mm)	20*14
发光角度 Beam angle	180°



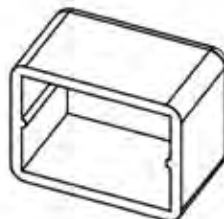
发光方向:三面正发光

Lighting Direction: 3 sides positive lighting

剪刀口 Cutting mark:Yes



出线堵头
End cap with hole

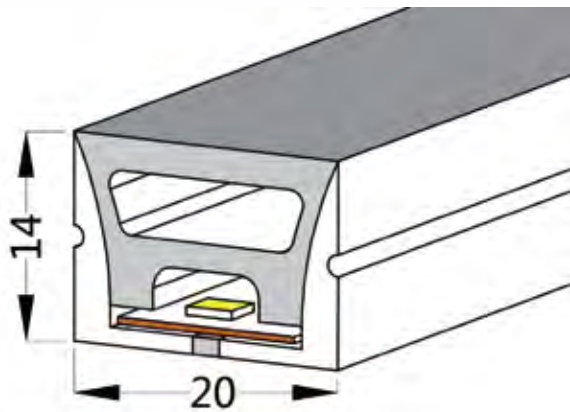
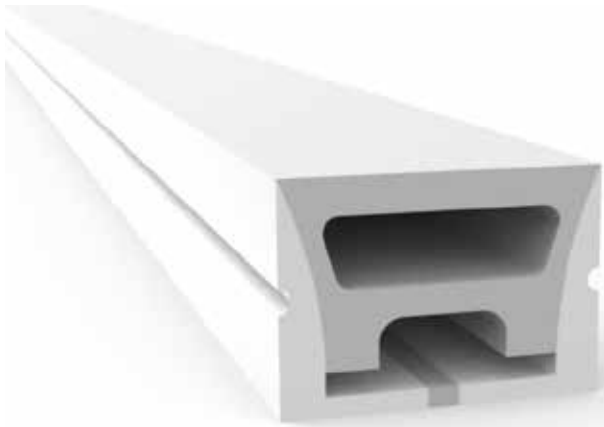


尾塞
End cap no hole

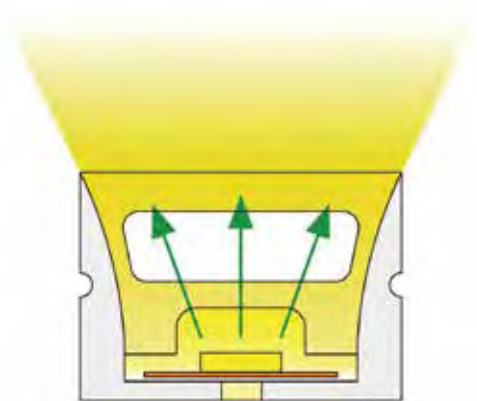


安装卡扣
Aluminum Clip

10. Side view 20*14(mm)



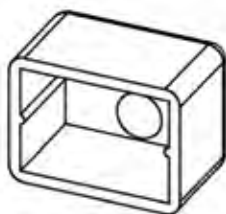
板宽 PCB Width(mm)	12
重量 Weight(g/m)	250
截面尺寸 Section size(mm)	20*14
发光角度 Beam angle	120°



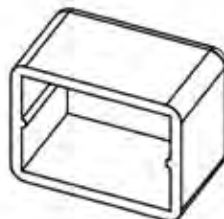
发光向: 正发光

Lighting Dairction: Positive Lighting

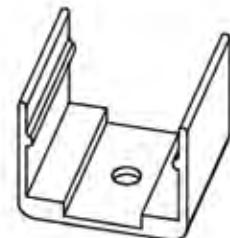
剪刀口 Cutting mark:Yes



出线堵头
End cap with hole

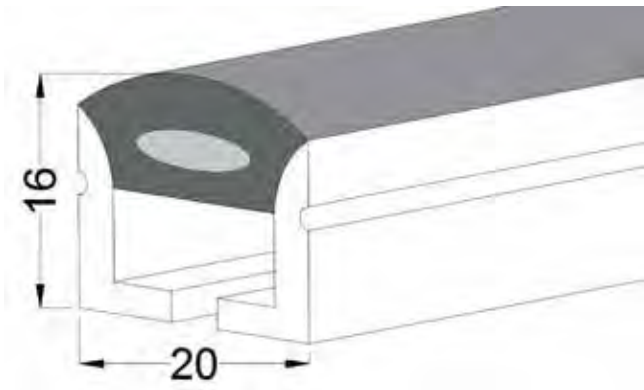
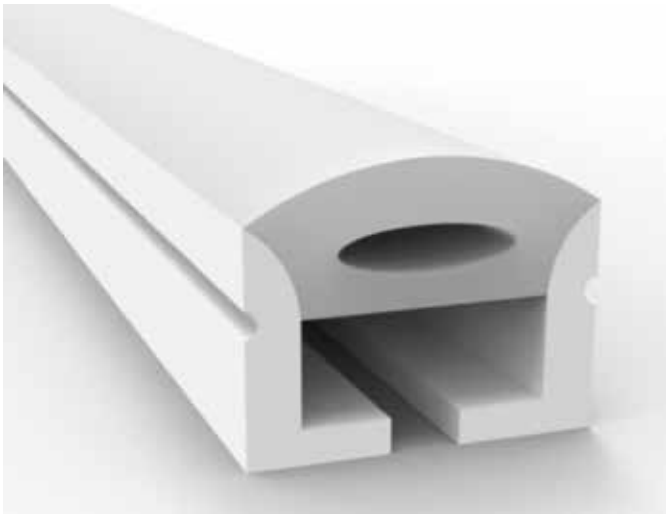


尾塞
End cap no hole



安装卡扣
Aluminum Clip

11. Side view 20*16(mm)



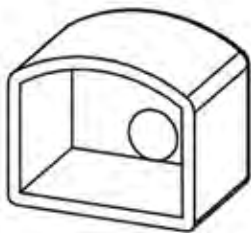
板宽 PCB Width(mm)	10
重量 Weight(g/m)	235
截面尺寸 Section size(mm)	20*16
发光角度 Beam angle	180°



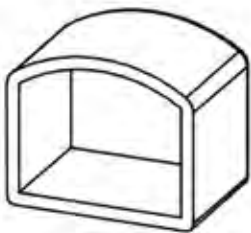
发光向:正发光

Lighting Dairction: Positive Lighting

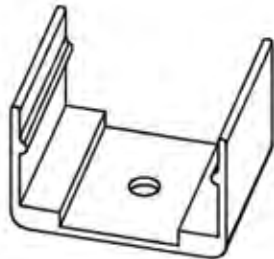
剪刀口 Cutting mark:Yes



出线堵头
End cap with hole

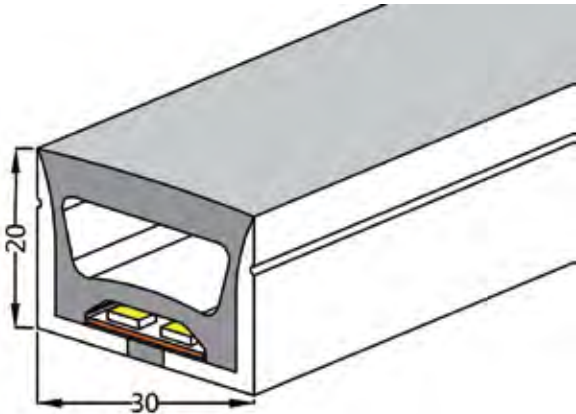


尾塞
End cap no hole

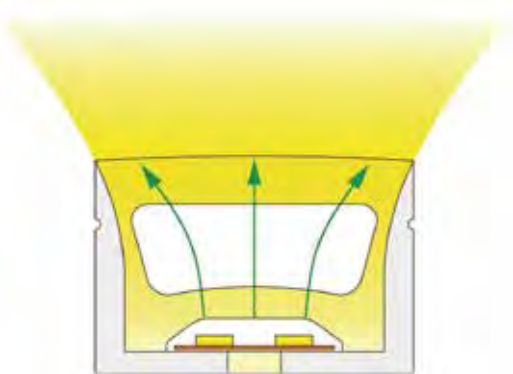


安装卡扣
Aluminum Clip

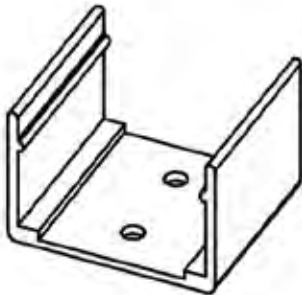
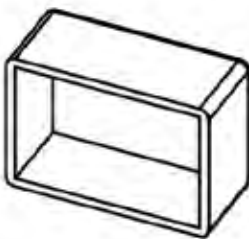
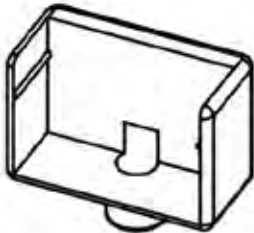
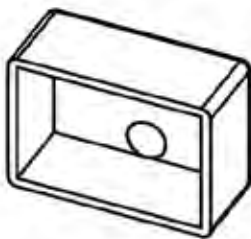
12. Side view 30*20(mm)



板宽 PCB Width(mm)	15
重量 Weight(g/m)	490
截面尺寸 Section size(mm)	30*20
发光角度 Beam angle	120°



发光向:正发光
Lighting Dairction: Positive Lighting
剪刀口 Cutting mark:Yes

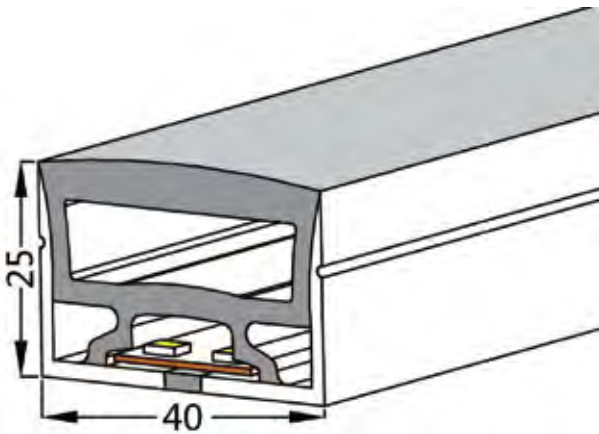


出线堵头
End cap with hole

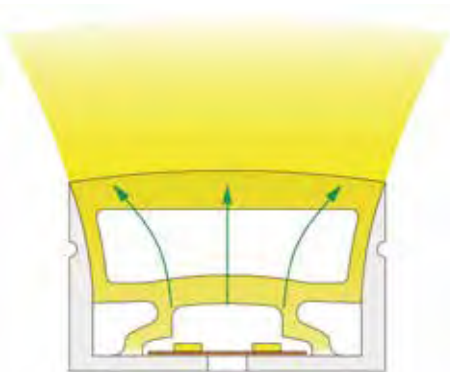
尾塞
End cap no hole

安装卡扣
Aluminum Clip

13.Side view 40*25(mm)



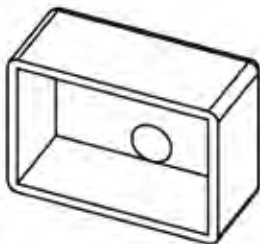
板宽 PCB Width(mm)	20
重量 Weight(g/m)	620
截面尺寸 Section size(mm)	40*25
发光角度 Beam angle	120°



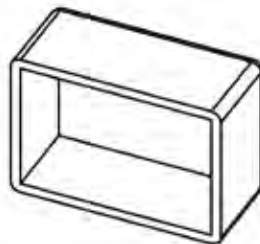
发光向:正发光

Lighting Dairction: Positive Lighting

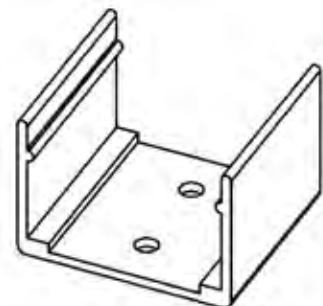
剪刀口 Cutting mark:Yes



出线堵头
End cap with hole

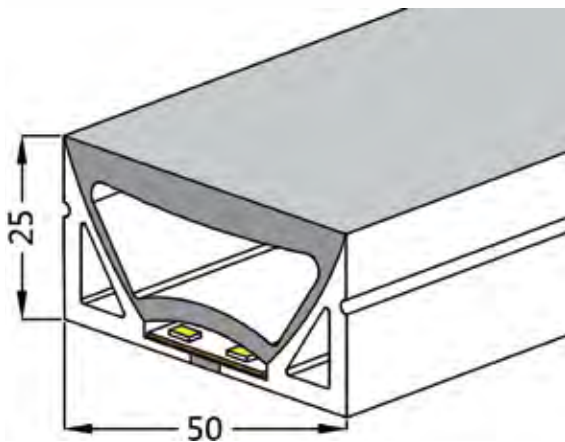


尾塞
End cap no hole

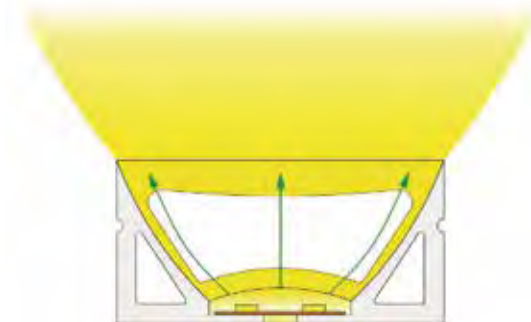


安装卡扣
Aluminum Clip

14. Side view 50*25(mm)



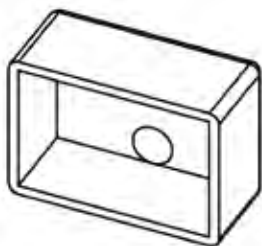
板宽 PCB Width(mm)	20
重量 Weight(g/m)	800
截面尺寸 Section size(mm)	50*25
发光角度 Beam angle	120°



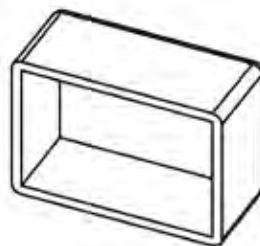
发光向:正发光

Lighting Dairction: Positive Lighting

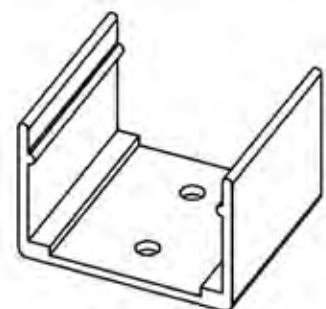
剪刀口 Cutting mark:Yes



出线堵头
End cap with hole

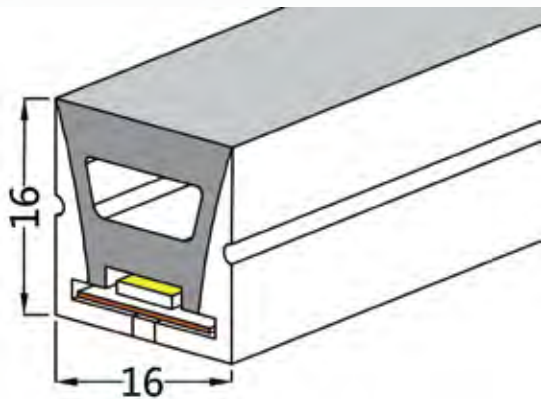
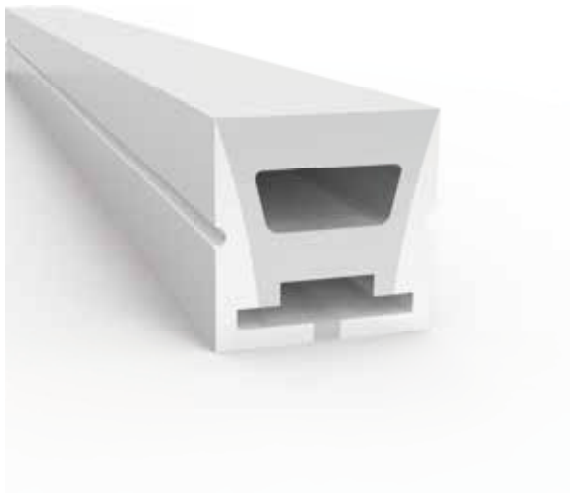


尾塞
End cap no hole

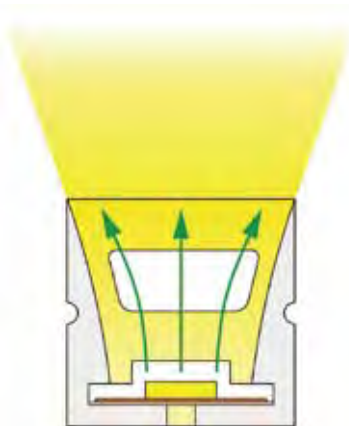


安装卡扣
Aluminum Clip

15. Side view 16*16(mm)



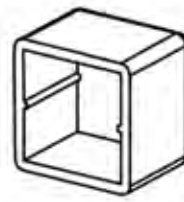
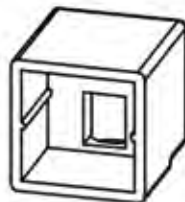
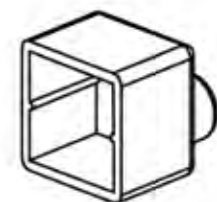
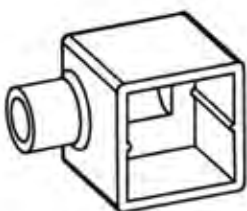
板宽 PCB Width(mm)	10/12
重量 Weight(g/m)	226
截面尺寸 Section size(mm)	16*16
发光角度 Beam angle	120°



发光向: 正发光

Lighting Dairrection: Positive Lighting

剪刀口 Cutting mark:Yes

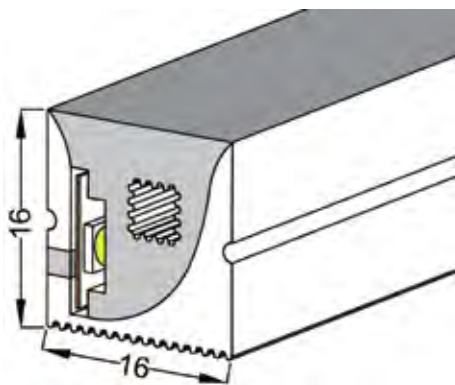
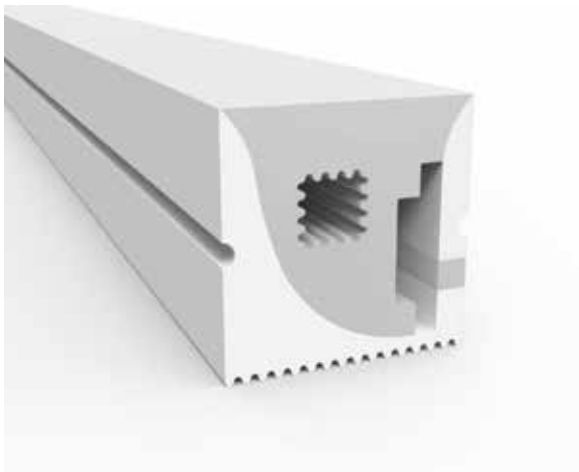


出线堵头
End cap with hole

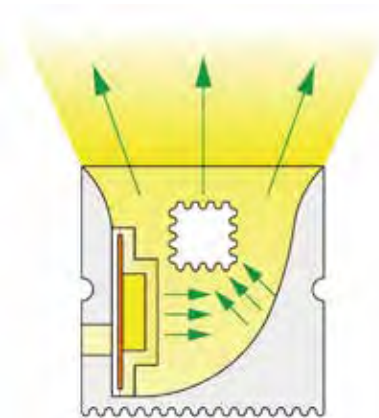
尾塞
End cap no hole

安装卡扣
Aluminum Clip

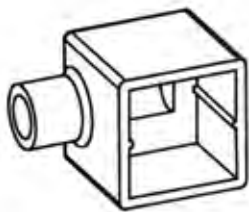
16. Side view 16*16(mm)



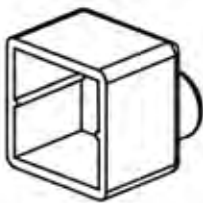
板宽 PCB Width(mm)	10
重量 Weight(g/m)	276
截面尺寸 Section size(mm)	16*16
发光角度 Beam angle	120°



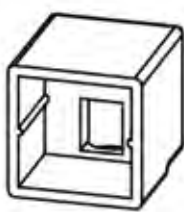
发光方向:侧发光
Lighting Direction: Edge Lighting
剪刀口 Cutting mark:Yes



出线堵头
End cap with hole

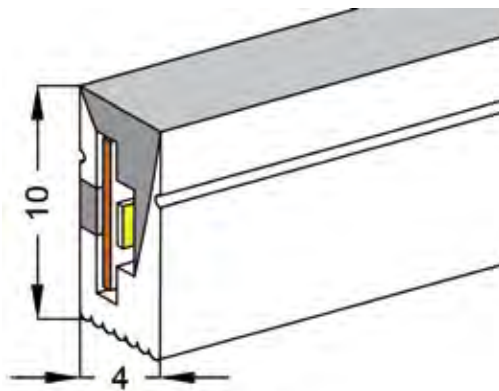
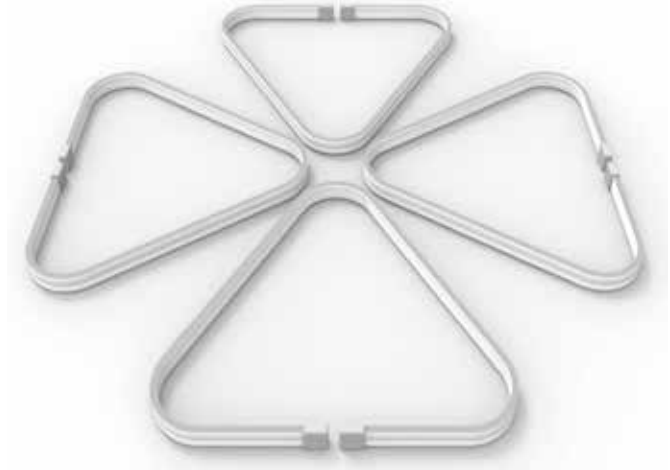
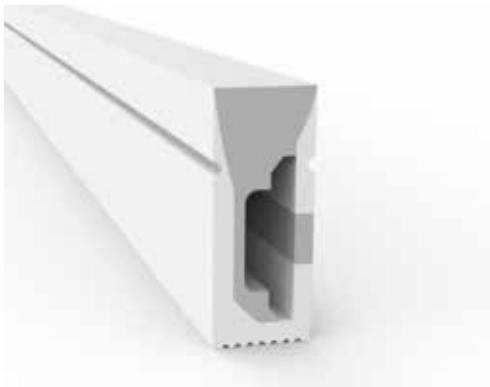


尾塞
End cap no hole

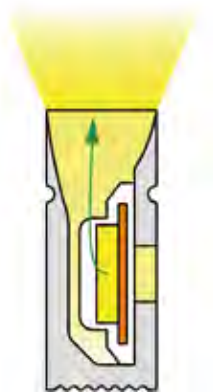


安装卡扣
Aluminum Clip

17. Side view 04*10(mm)



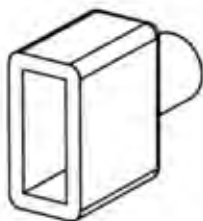
板宽 PCB Width(mm)	5/6
重量 Weight(g/m)	43/35
截面尺寸 Section size(mm)	4*10
发光角度 Beam angle	120°



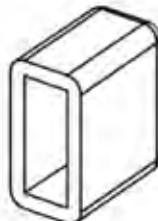
发光方向:侧发光

Lighting Direction: Edge Lighting

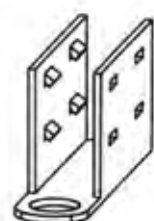
剪刀口 Cutting mark:Yes



出线堵头
End cap with hole

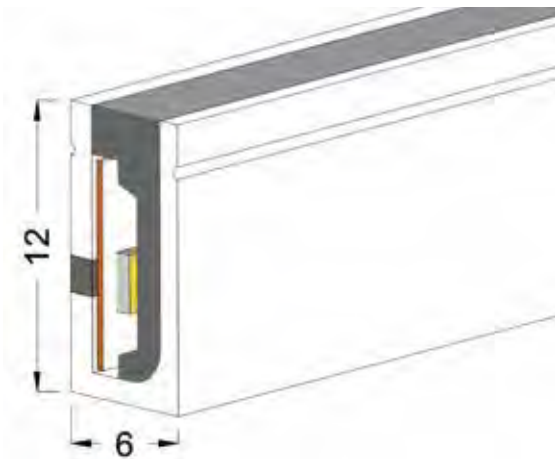
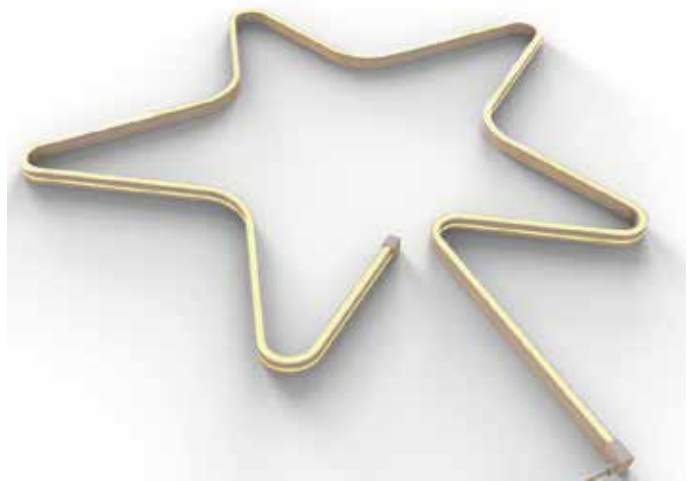


尾塞
End cap no hole



安装卡扣
Aluminum Clip

18. Side view 06*12(mm)



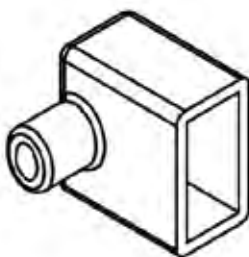
板宽 PCB Width(mm)	8
重量 Weight(g/m)	77
截面尺寸 Section size(mm)	6*12
发光角度 Beam angle	120°



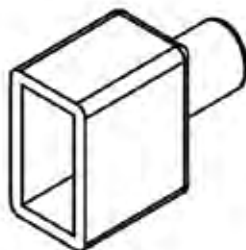
发光方向:侧发光

Lighting Direction: Edge Lighting

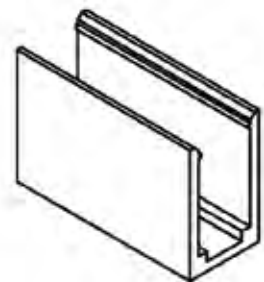
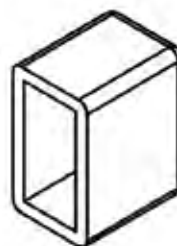
剪刀口 Cutting mark:Yes



出线堵头
End cap with hole

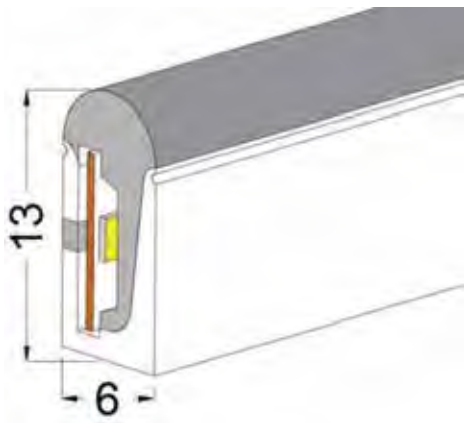
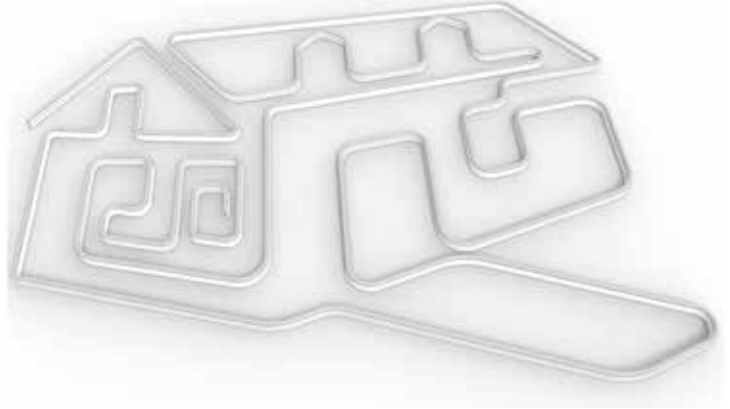
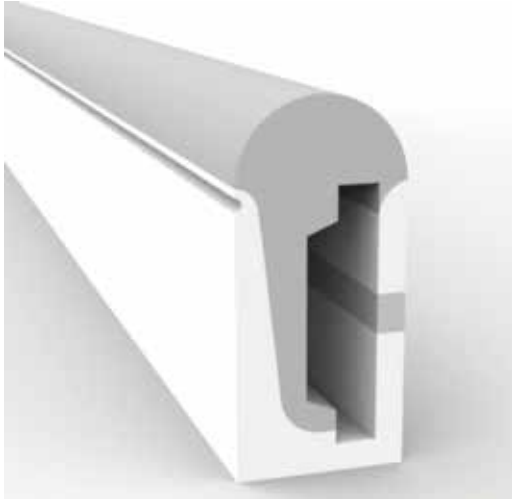


尾塞
End cap no hole

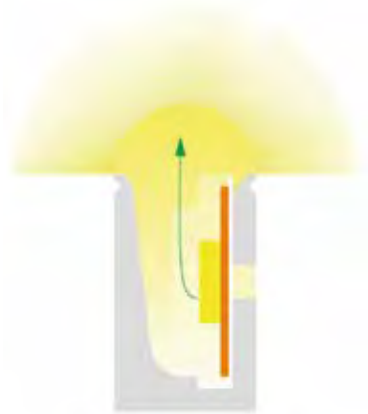


安装卡扣
Aluminum Clip

19. Side view 06*13(mm)



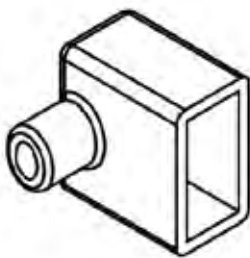
板宽 PCB Width(mm)	8
重量 Weight(g/m)	77
截面尺寸 Section size(mm)	6*13
发光角度 Beam angle	180°



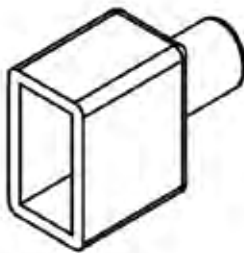
发光方向:侧发光

Lighting Direction: Edge Lighting

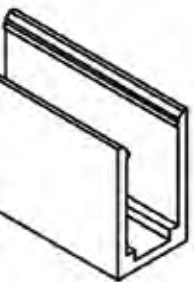
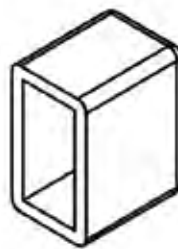
剪刀口 Cutting mark:Yes



出线堵头
End cap with hole

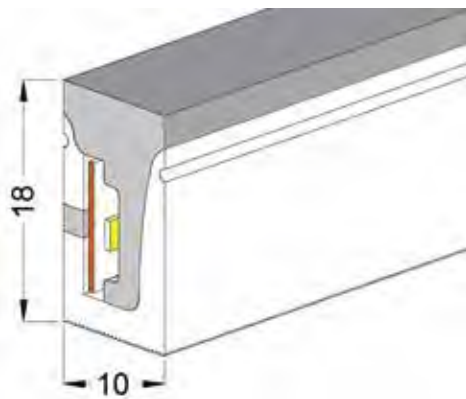
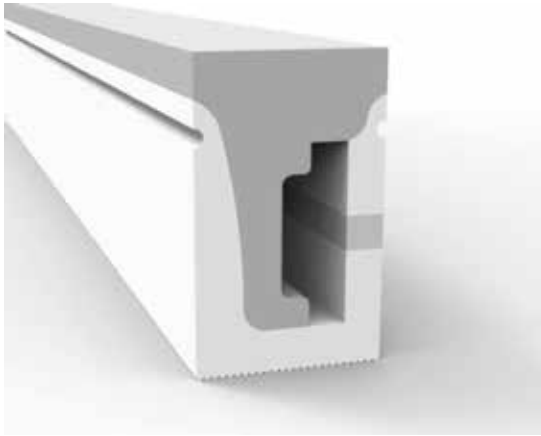


尾塞
End cap no hole

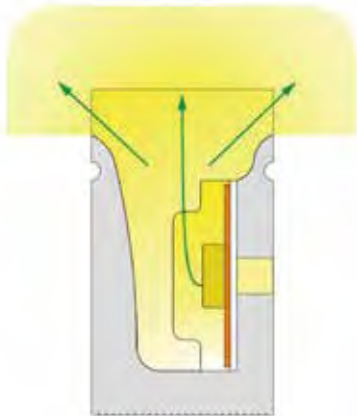


安装卡扣
Aluminum Clip

20.Side view v10*18(mm)



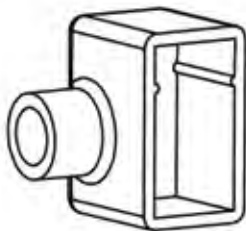
板宽 PCB Width(mm)	10
重量 Weight(g/m)	194
截面尺寸 Section size(mm)	10*18
发光角度 Beam angle	180°



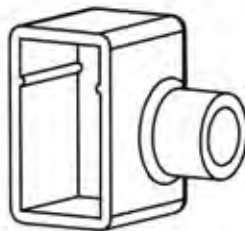
发光方向:侧发光

Lighting Direction: Edge Lighting

剪刀口 Cutting mark:Yes



出线堵头
End cap with hole

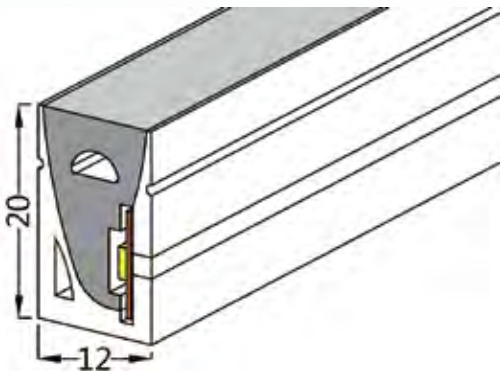
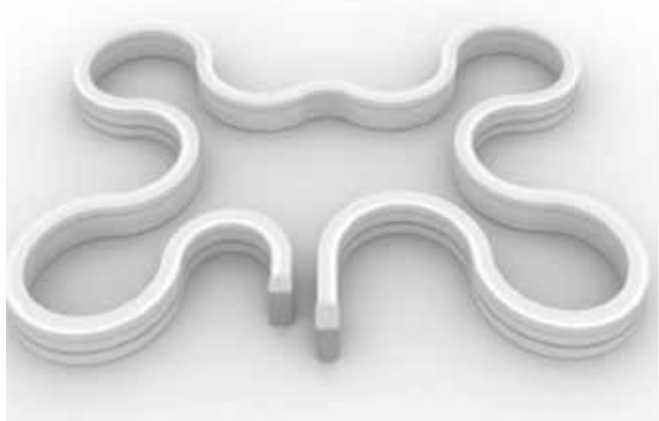
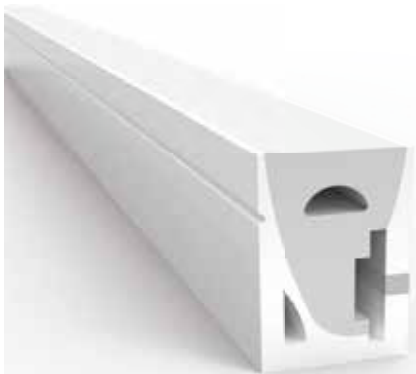


尾塞
End cap no hole

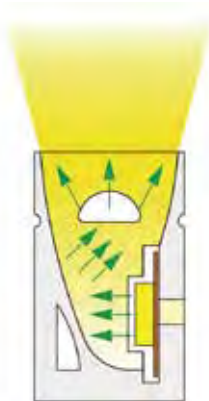


安装卡扣
Aluminum Clip

21. Side view 12*20(mm)



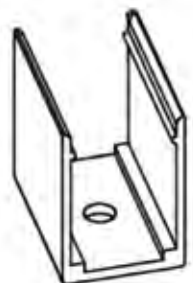
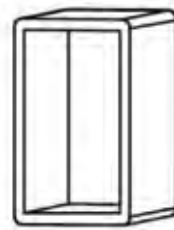
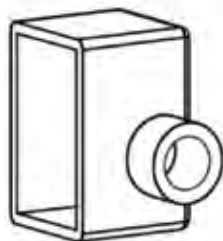
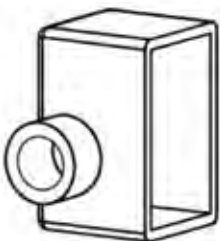
板宽 PCB Width(mm)	10
重量 Weight(g/m)	252
截面尺寸 Section size(mm)	12*20
发光角度 Beam angle	120°



发光方向:侧发光

Lighting Direction: Edge Lighting

剪刀口 Cutting mark:Yes

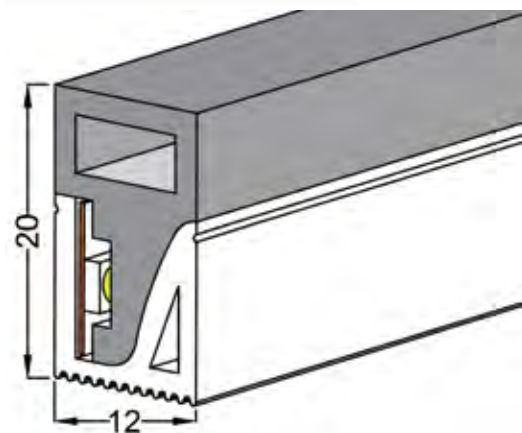


出线堵头
End cap with hole

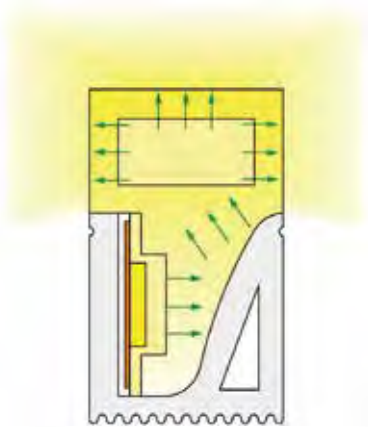
尾塞
End cap no hole

安装卡扣
Aluminum Clip

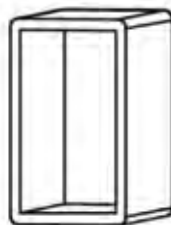
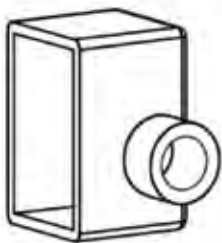
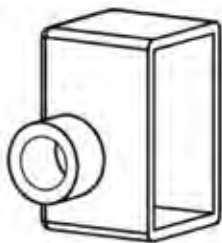
22. Side view 12*20(mm)



板宽 PCB Width(mm)	10
重量 Weight(g/m)	232
截面尺寸 Section size(mm)	12*20
发光角度 Beam angle	180°



发光方向:三面侧发光	
Lighting Directi on: 3 sides edgelighting	

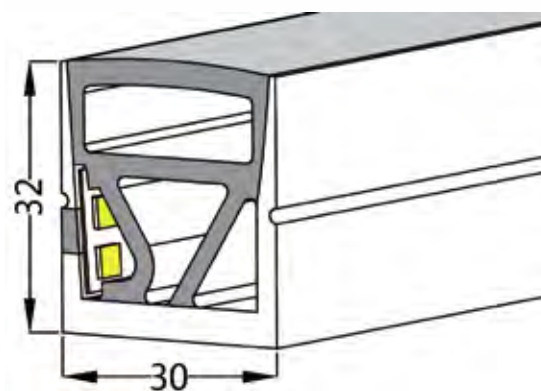


出线堵头
End cap with hole

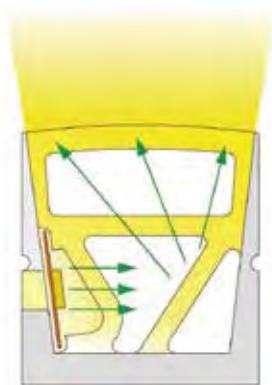
尾塞
End cap no hole

安装卡扣
Aluminum Clip

23. Side view 30*32(mm)



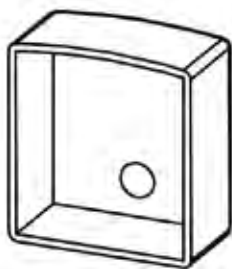
板宽 PCB Width(mm)	15
重量 Weight(g/m)	595
截面尺寸 Section size(mm)	30*32
发光角度 Beam angle	120°



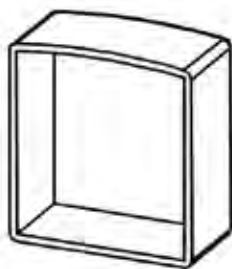
发光方向:侧发光

Lighting Direction: Edge Lighting

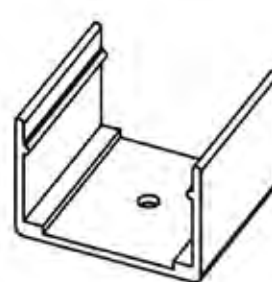
剪刀口 Cutting mark:Yes



出线堵头
End cap with hole

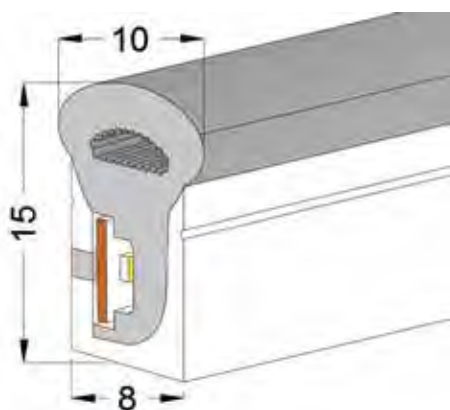
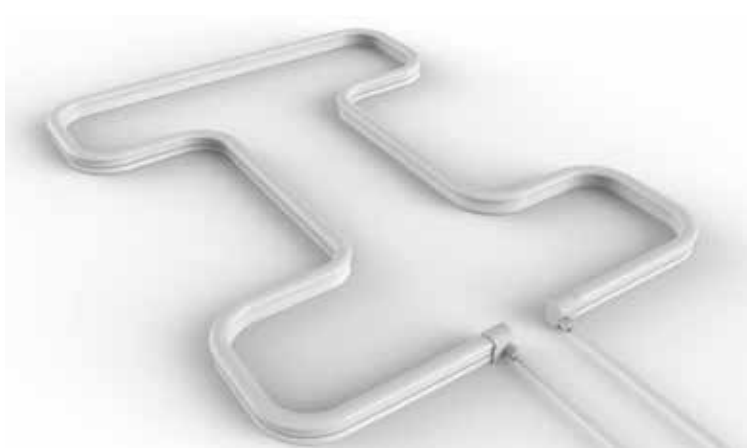


尾塞
End cap no hole

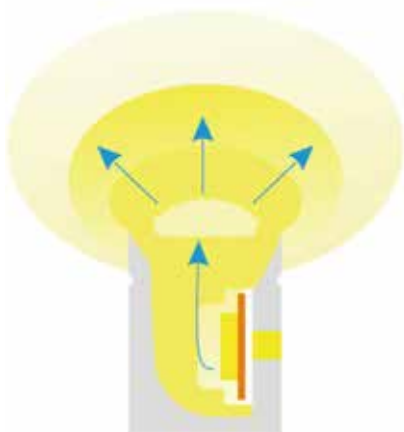


安装卡扣
Aluminum Clip

24.Side view 08*15(mm)



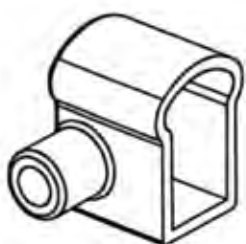
板宽 PCB Width(mm)	5
重量 Weight(g/m)	132
截面尺寸 Section size(mm)	8*15
发光角度 Beam angle	270°



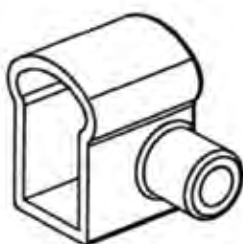
发光方向:侧发光

Lighting Direction: Edge Lighting

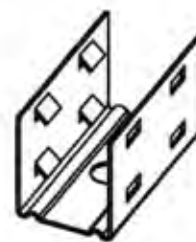
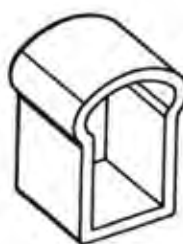
剪刀口 Cutting mark:Yes



出线堵头
End cap with hole

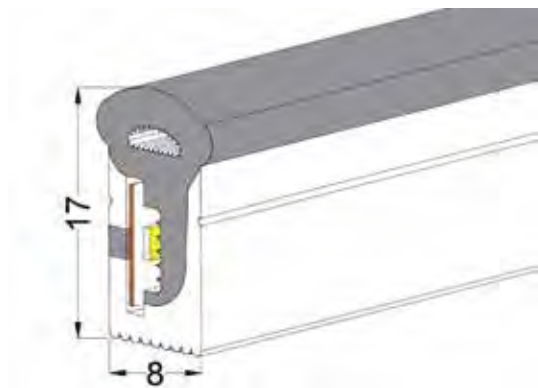
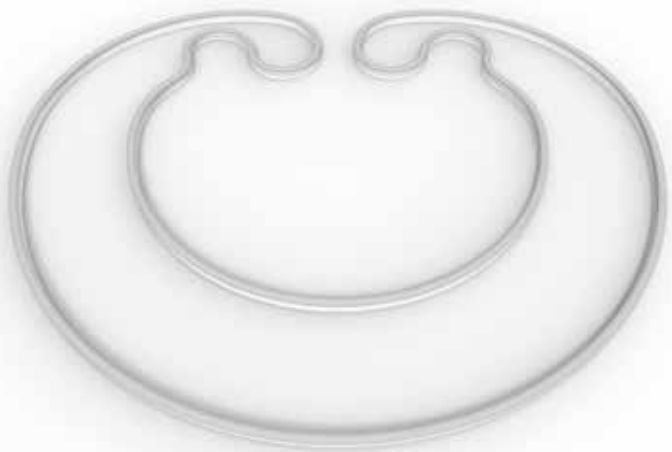
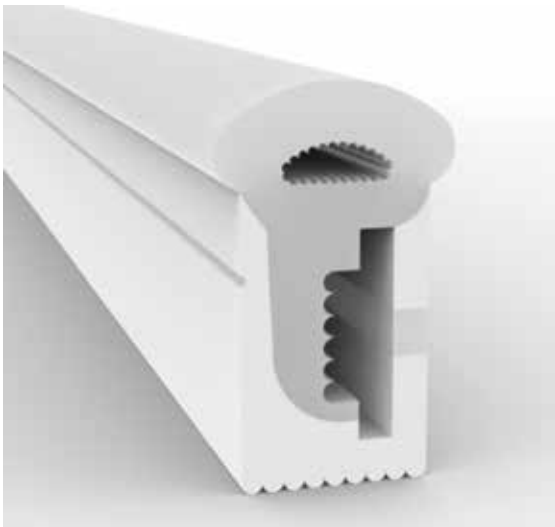


尾塞
End cap no hole

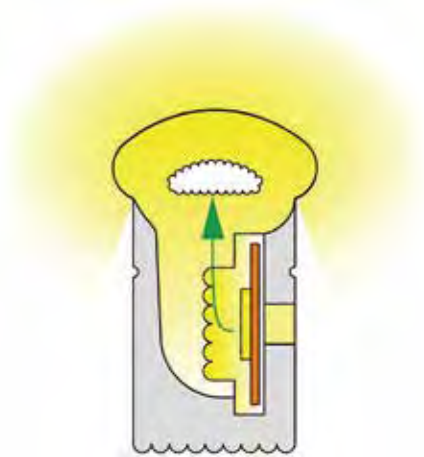


安装卡扣
Aluminum Clip

25.Side view 08*17(mm)



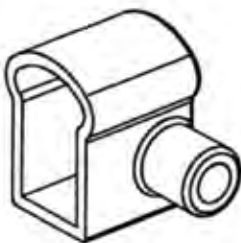
板宽 PCB Width(mm)	8
重量 Weight(g/m)	145
截面尺寸 Section size(mm)	8*17
发光角度 Beam angle	270°



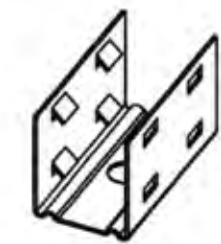
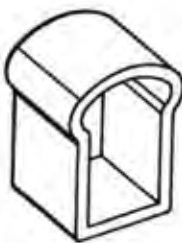
发光方向:侧发光
Lighting Direction: Edge Lighting
剪刀口 Cutting mark:Yes



出线堵头
End cap with hole

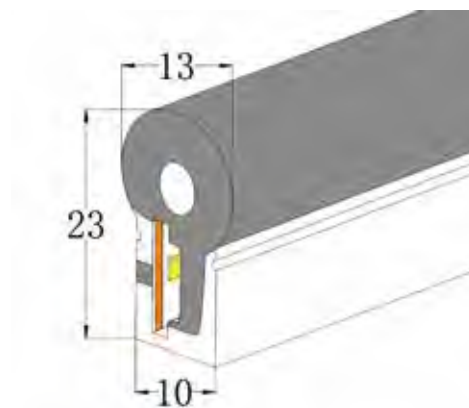


尾塞
End cap no hole

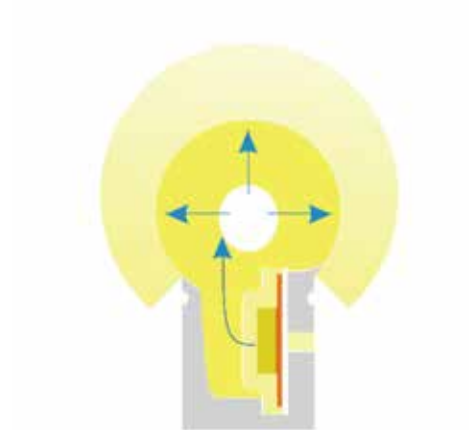


安装卡扣
Aluminum Clip

26. Side view 10*23(mm)



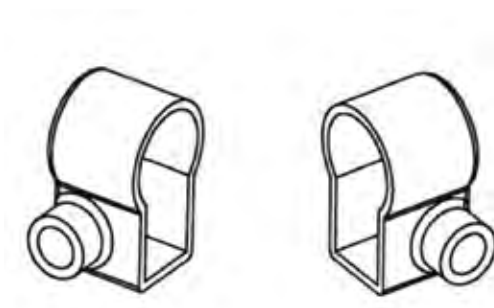
板宽 PCB Width(mm)	10
重量 Weight(g/m)	264
截面尺寸 Section size(mm)	10*23
发光角度 Beam angle	270°



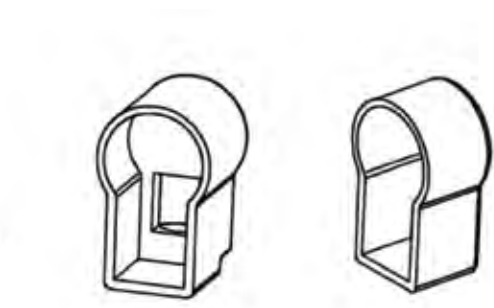
发光方向:侧发光

Lighting Direction: Edge Lighting

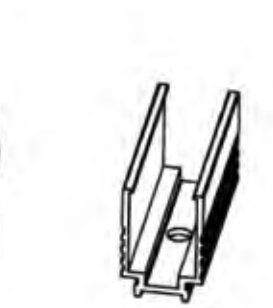
剪刀口 Cutting mark:Yes



出线堵头
End cap with hole

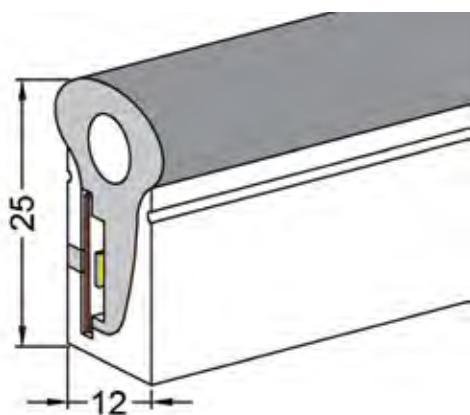


尾塞
End cap no hole

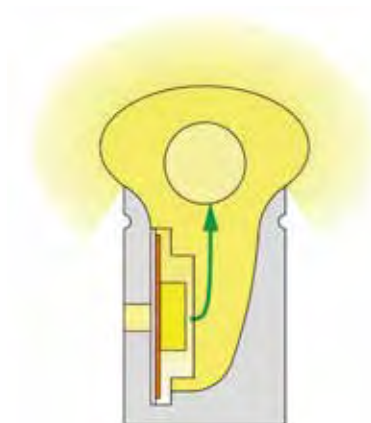


安装卡扣
Aluminum Clip

27. Side view 12*25(mm)



板宽 PCB Width(mm)	12
重量 Weight(g/m)	297
截面尺寸 Section size(mm)	12*25
发光角度 Beam angle	270°



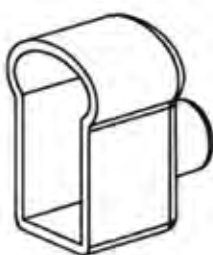
发光方向:侧发光

Lighting Direction: Edge Lighting

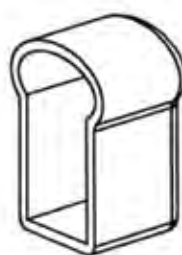
剪刀口 Cutting mark:Yes



出线堵头
End cap with hole

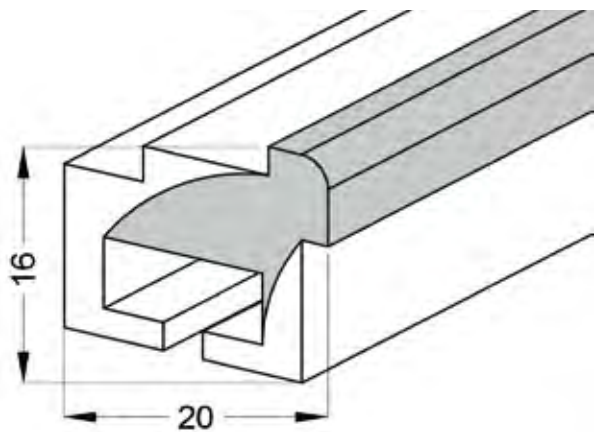
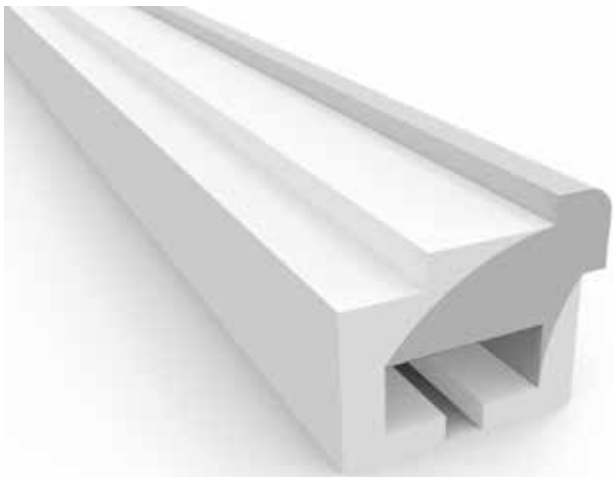


尾塞
End cap no hole

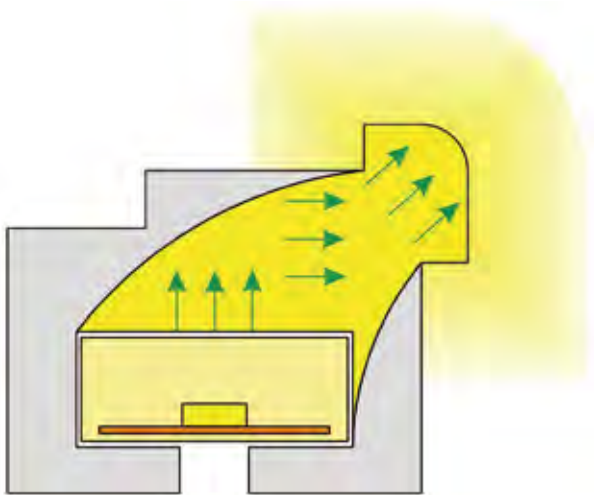


安装卡扣
Aluminum Clip

28.Side view 16*20(mm)

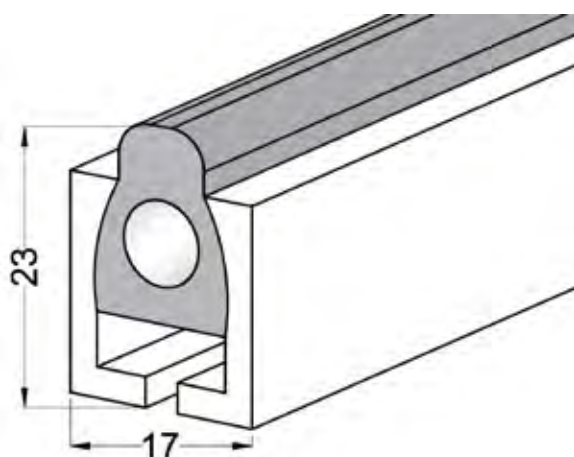
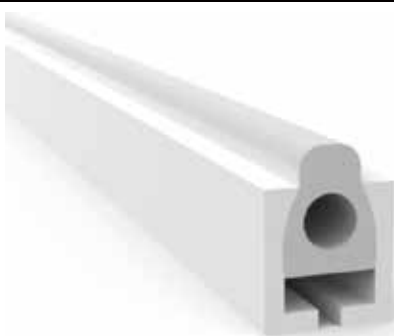


板宽 PCB Width(mm)	10
重量 Weight(g/m)	235
截面尺寸 Section size(mm)	12*25
发光角度 Beam angle	20*16

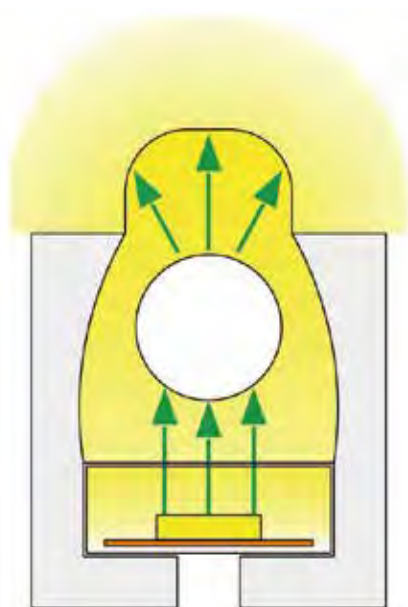


发光向:正发光
Lighting Dairction: Positive Light-
剪刀口 Cutting mark:Yes

29. Side view 17*23(mm)



板宽 PCB Width(mm)	10
重量 Weight(g/m)	264
截面尺寸 Section size(mm)	10*23
发光角度 Beam angle	180°

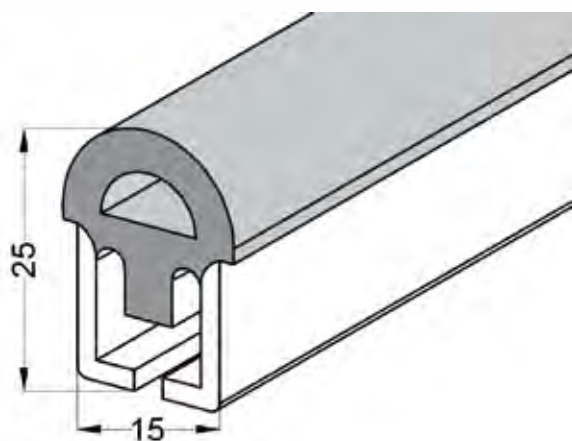
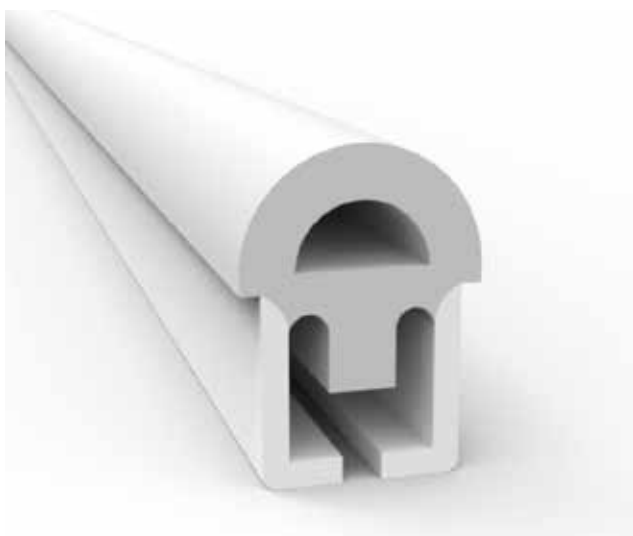


发光向:正发光

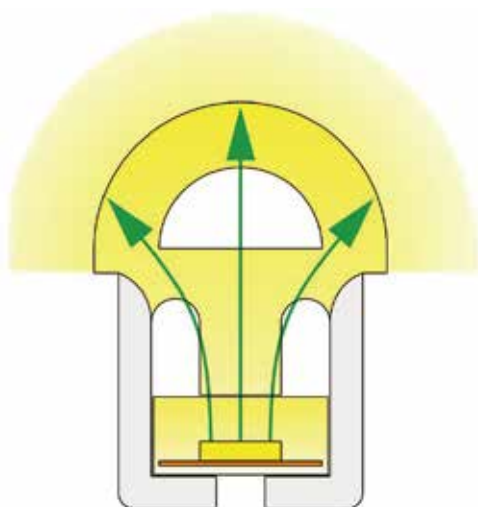
Lighting Dairction: Positive Light-

剪刀口 Cutting mark:Yes

30. Side view 15 *25(mm)



板宽 PCB Width(mm)	10
重量 Weight(g/m)	297
截面尺寸 Section size(mm)	12*25
发光角度 Beam angle	180°

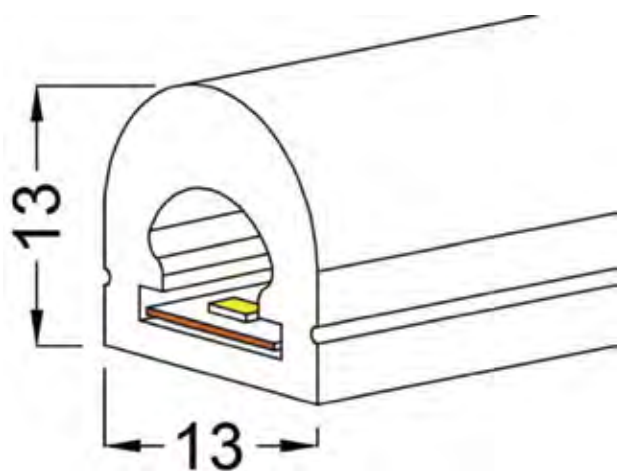


发光向:正发光

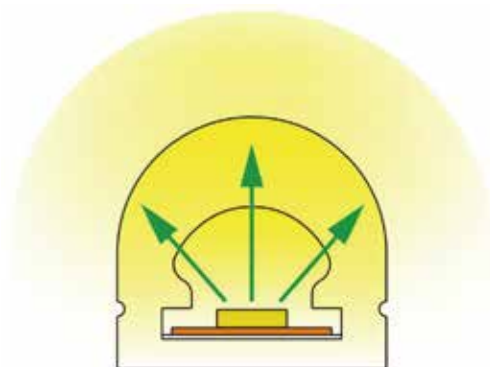
Lighting Dairrection: Positive Light-

剪刀口 Cutting mark:Yes

31. Side view 13*13(mm)



板宽 PCB Width(mm)	8
重量 Weight(g/m)	133
截面尺寸 Section size(mm)	13*13
发光角度 Beam angle	180°



发光向:正发光

Lighting Dairction: Positive Light-

剪刀口 Cutting mark:Yes



出线堵头
End cap with hole

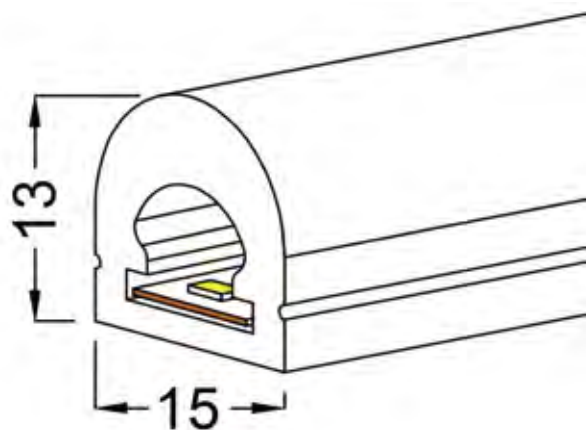
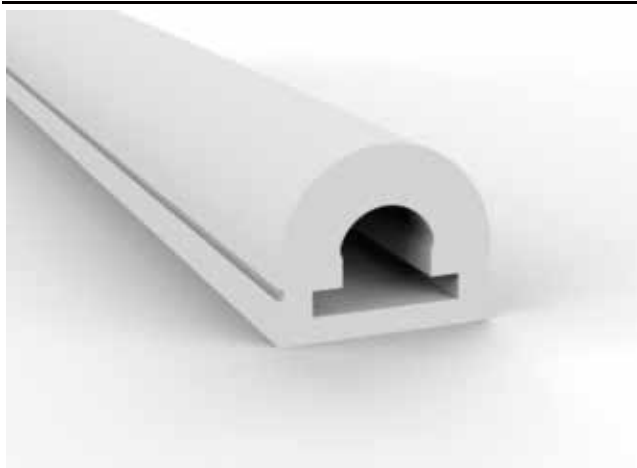


尾塞
End cap no hole



安装卡扣
Plastic clip

32. Side View 13*15(mm)



板宽 PCB Width(mm)	10
重量 Weight(g/m)	142
截面尺寸 Section size(mm)	13*15
发光角度 Beam angle	180°

发光方向:正发光

Lighting Dairction: Positive Light-

剪刀口 Cutting mark:Yes



出线堵头
End cap with hole

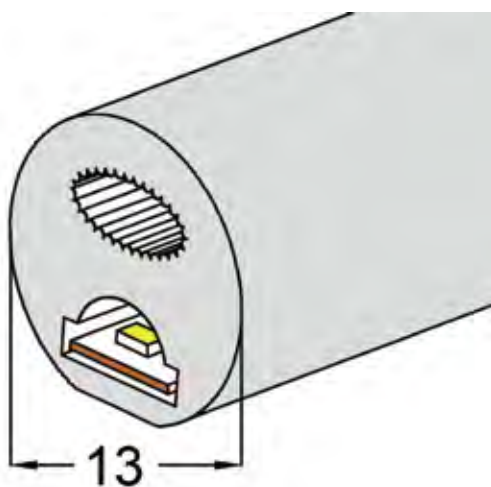
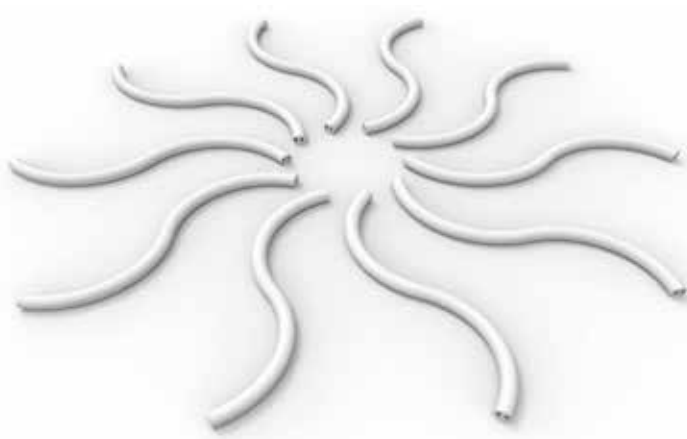


尾塞
End cap no hole



安装卡扣
Plastic clip

33. Side view $\phi 13(\text{mm}) 360^\circ$



板宽 PCB Width(mm)	5
重量 Weight(g/m)	135
截面尺寸 Section size(mm)	$\phi 13$
发光角度 Beam angle	270°



发光方向:360°发光

Lighting Direction: 360°

剪刀口 Cutting mark:Yes



出线堵头
End cap with hole

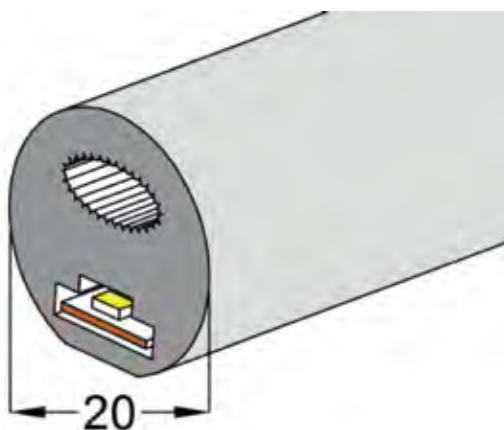
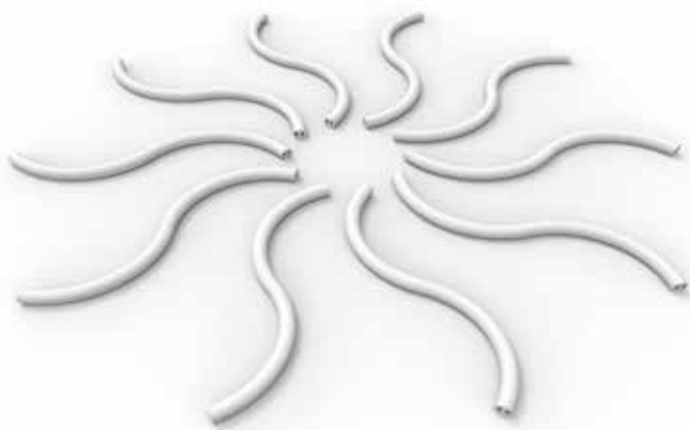


尾塞
End cap no hole



安装卡扣
Plastic clip

34.Side viewφ20(mm)360°



板宽 PCB Width(mm)	10
重量 Weight(g/m)	321
截面尺寸 Section size(mm)	φ20
发光角度 Beam angle	270°



发光方向:360°发光

Lighting Direction: 360°

剪刀口 Cutting mark:Yes



出线堵头
End cap with hole

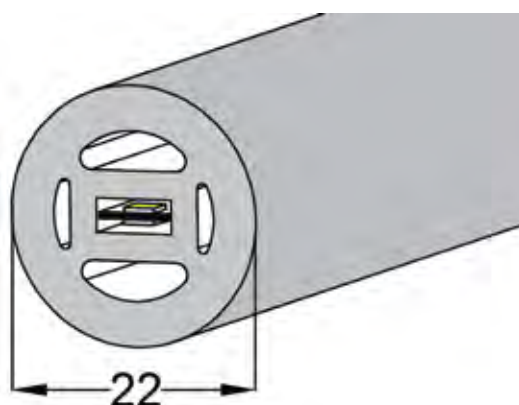


尾塞
End cap no hole

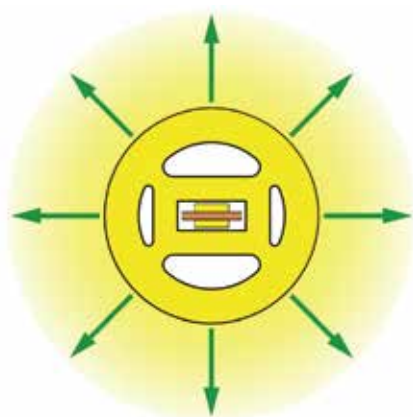


安装卡扣
Plastic clip

35. Side view $\phi 22(\text{mm}) 360^\circ$

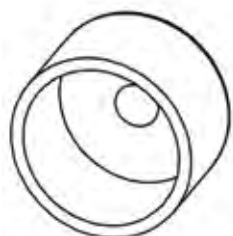


板宽 PCB Width(mm)	double-sided 6
重量 Weight(g/m)	362.5
截面尺寸 Section size(mm)	$\phi 22$
发光角度 Beam angle	360°

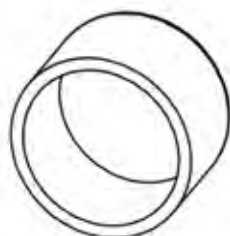


发光方向: 360° 发光

Lighting Direction: 360°



出线堵头
End cap with hole



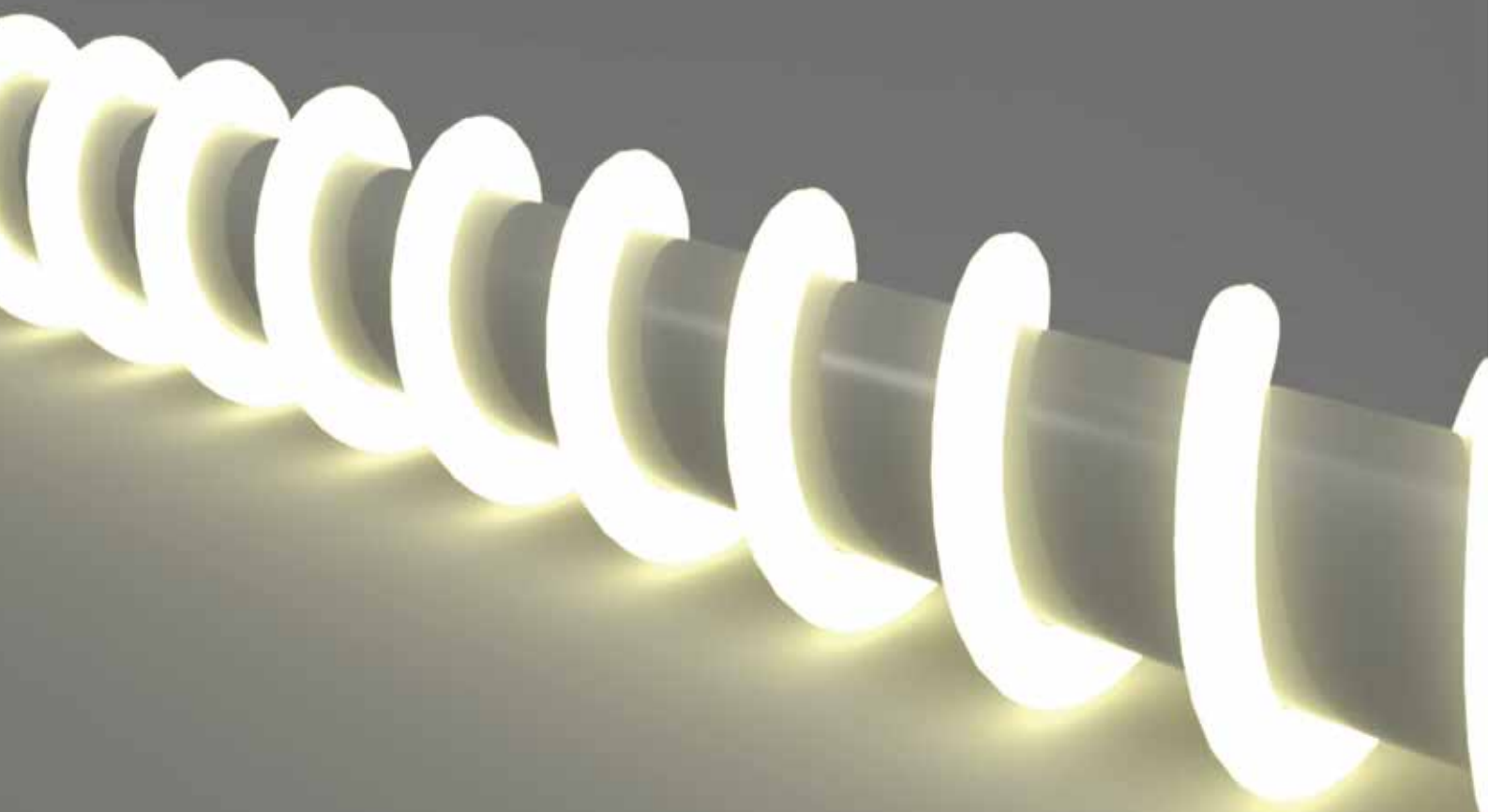
尾塞
End cap no hole



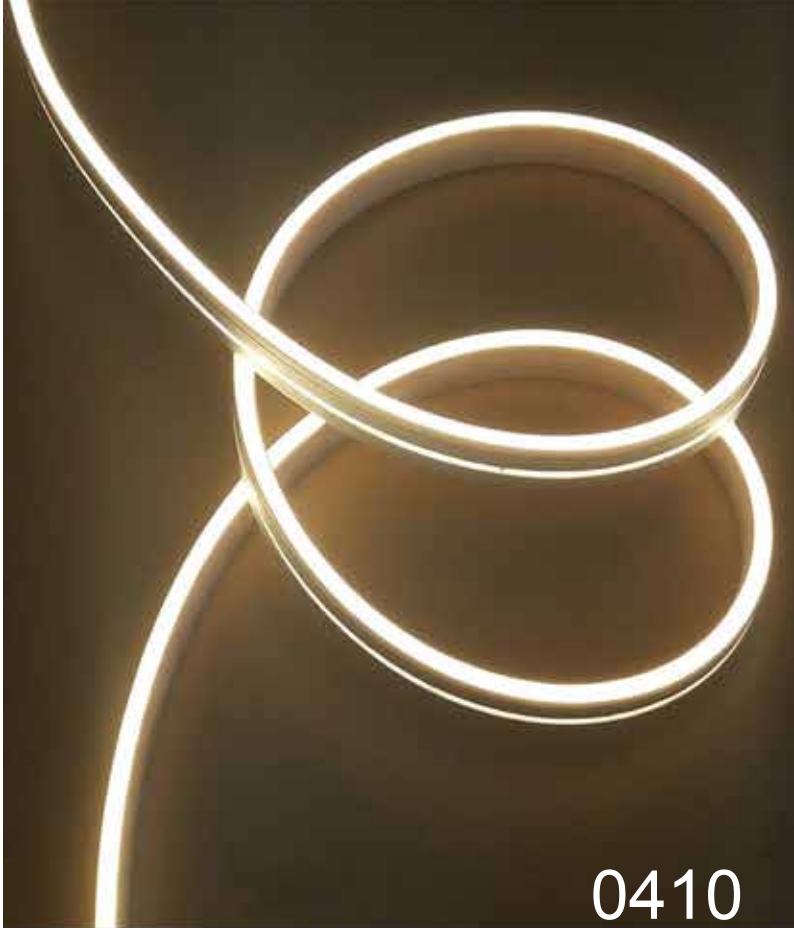
安装卡扣
Plastic clip



1220



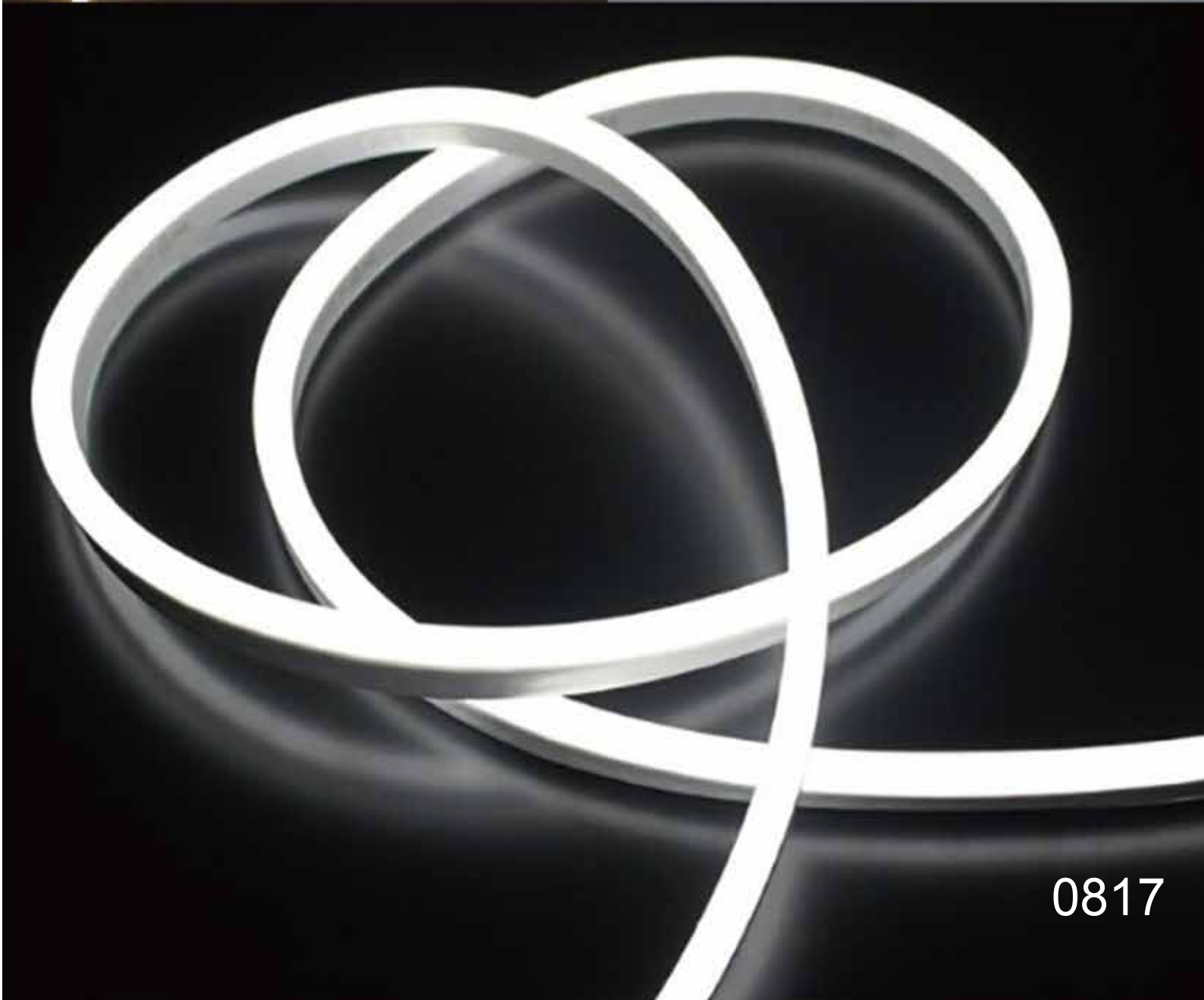
D-22



0410



0410



0817



<http://www.szzccc.com>